

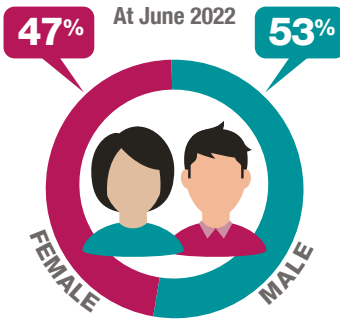


Australian Government  
Australian Taxation Office

# Self-managed super funds

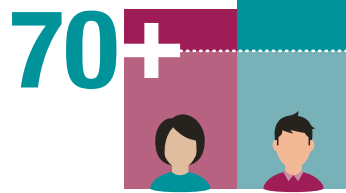
## Members by gender 2020–21

### KEY STATISTICS

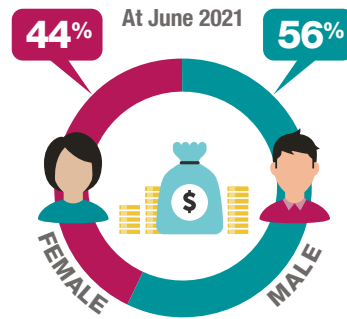


Over 1.1 MILLION SMSF members

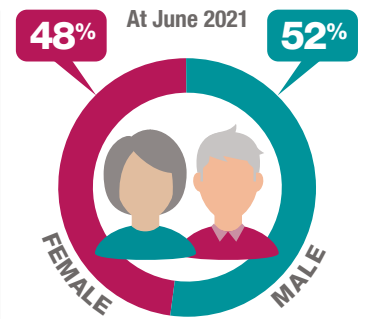
At June 2022, there was a higher proportion of males than females aged 70+



A fairly even distribution of male and female members across age ranges of 69 years and under



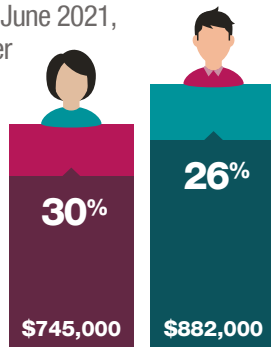
TOTAL member holdings of SMSF assets



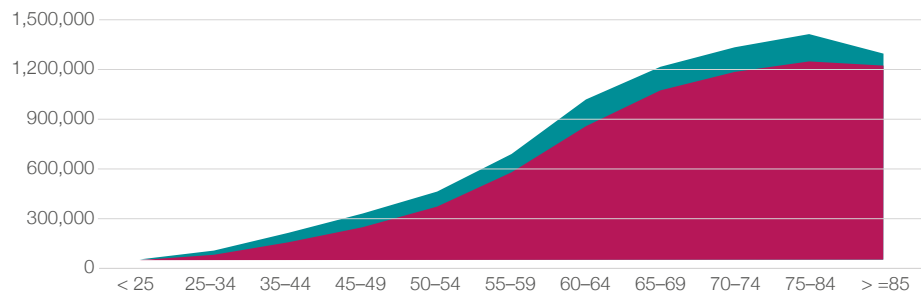
SMSF members in pension phase

### SMSF MEMBER BALANCES

Over the five years to June 2021, female average member balances increased by 30% to \$745,000 while male average member balances increased by 26% to \$882,000

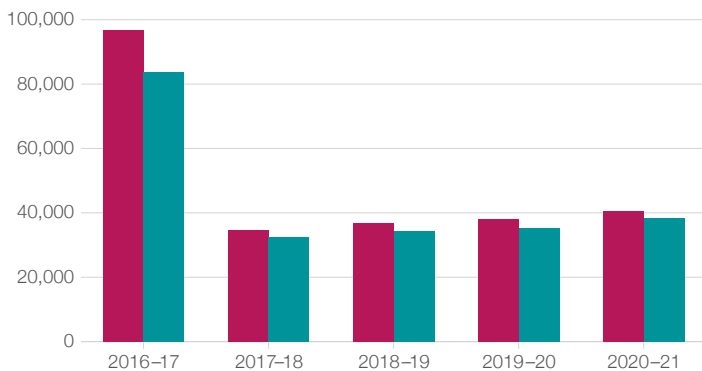


At June 2021, Males had higher average SMSF member balances than females – across all age groups (except those under 25)



### CONTRIBUTIONS TO SMSFs FOR MALE AND FEMALE MEMBERS

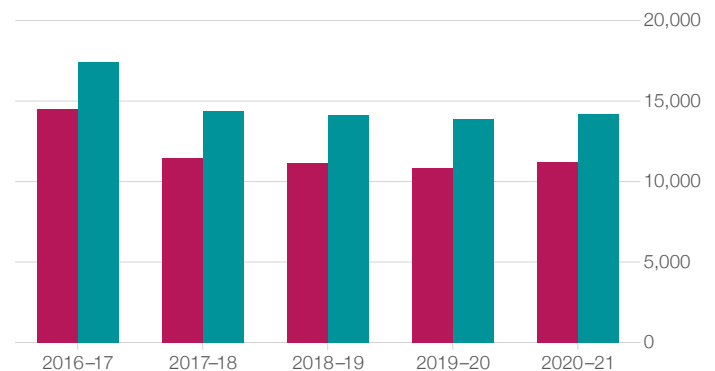
#### Average MEMBER contributions



Average MEMBER contributions increased to \$40,500 or by 6% for females and to \$38,300 or by 8% for males from 2019–20 to 2020–21



#### Average EMPLOYER contributions



Average EMPLOYER contributions increased to \$11,200 or by 3% for females and to \$14,200 or by 2% for males from 2019–20 to 2020–21

