

SMSF members by gender 2017-18

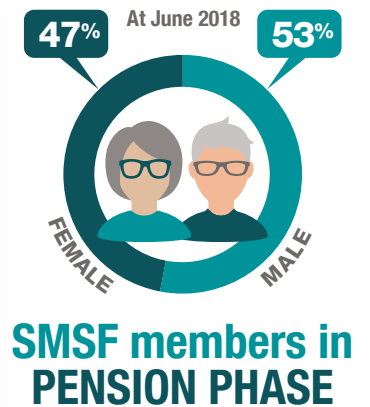
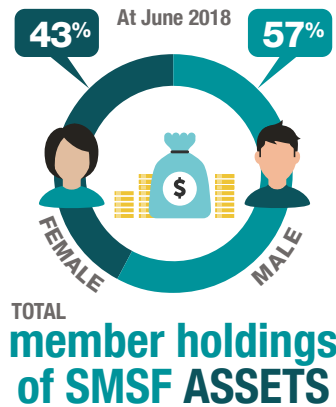
KEY STATISTICS



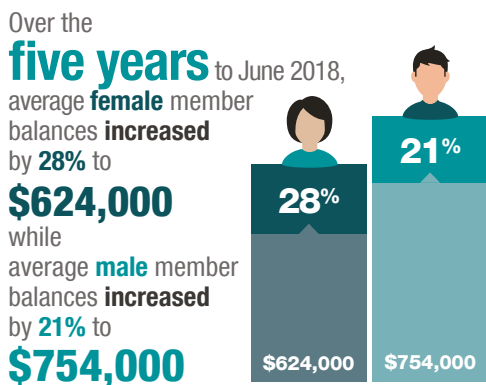
At June 2019, there was a **higher proportion of males than females aged 75+**



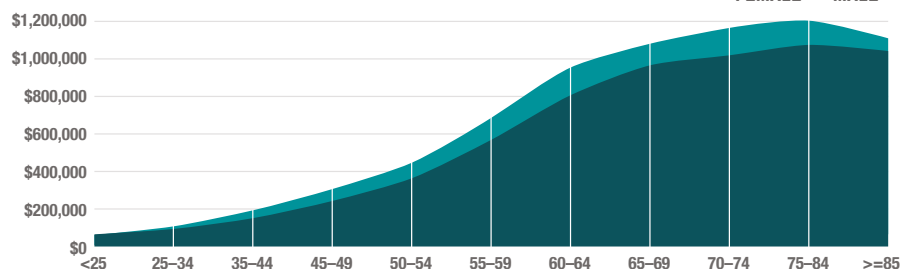
A fairly **even distribution** of male and female members across age ranges of **74 years and under**



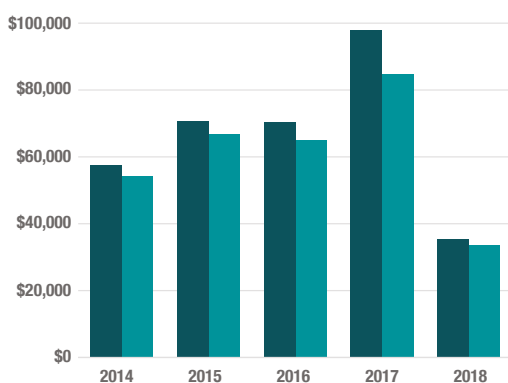
SMSF MEMBER BALANCES



Males aged **25 years and over** had **higher average** SMSF member balances than **females** at June 2018

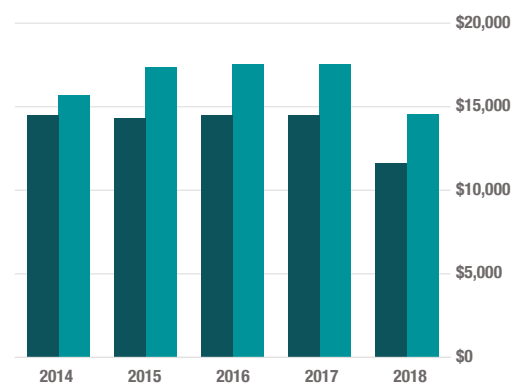


CONTRIBUTIONS TO SMSFs FOR MALE AND FEMALE MEMBERS



Over the **five years** to June 2018, average member contributions to SMSFs for both **male** and **female** members **dropped by 38%**

This is largely driven by the spike of **39% for females** and **31% for males** from 2016 to 2017 followed by a drop of **64% for females** and **60% for males** in 2018



From 2016-17 to 2017-18 average **MEMBER** contributions dropped to **\$35,000** or by **64% for females** and to **\$34,000** or by **60% for males**



From 2016-17 to 2017-18 average **EMPLOYER** contributions dropped to **\$12,000** or by **20% for females** and to **\$15,000** or by **17% for males**

