

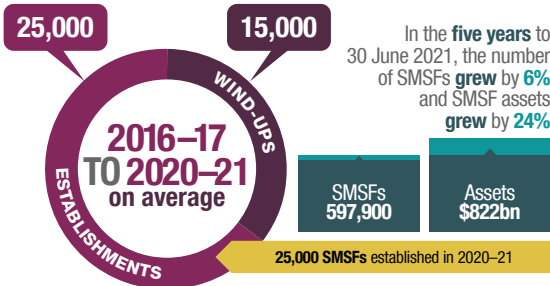


Self-managed super funds

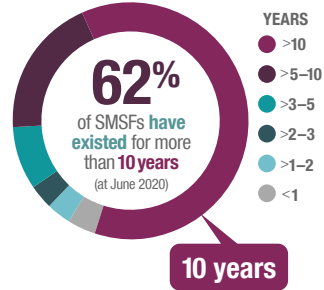
Annual statistics overview 2019–20

SMSF OVERVIEW

Establishments and wind-ups



SMSFs make up 25% of all super assets

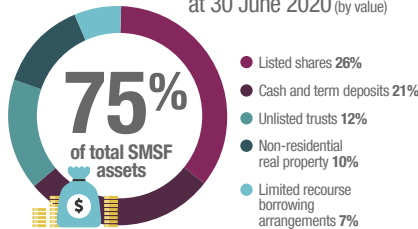


Services used to meet SMSF tax and regulatory obligations in 2019–2020

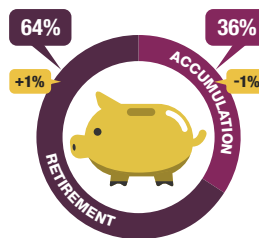
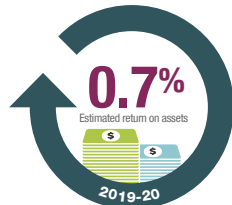


ASSETS

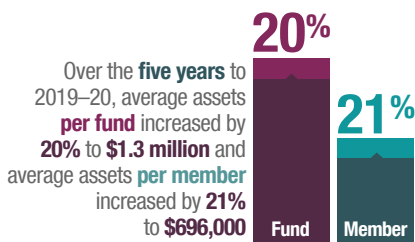
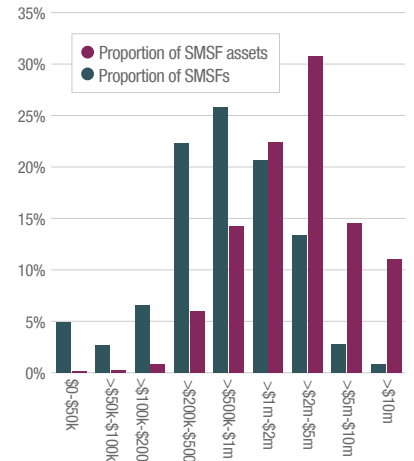
The top five assets held by SMSFs at 30 June 2020 (by value)



SMSFs achieved positive returns for the past five years



Proportion of SMSFs by asset range at June 2020

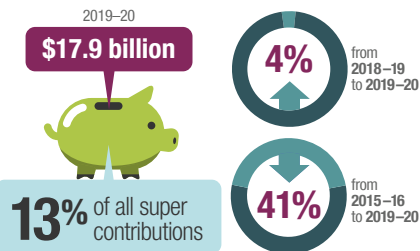


INS & OUTS

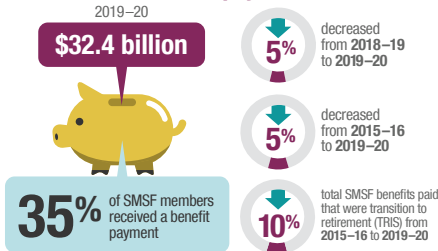
At 30 June 2020, 9% of members had an SMSF closing account balance



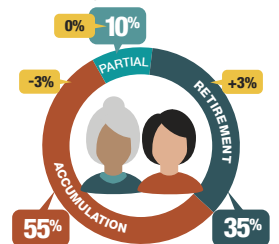
SMSF contributions



SMSF benefit payments



SMSFs in accumulation vs retirement phase in the year to 30 June 2020

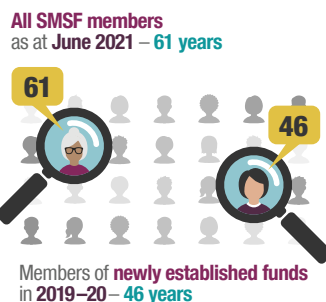


LET'S TALK ABOUT SMSFS AND THEIR MEMBERS

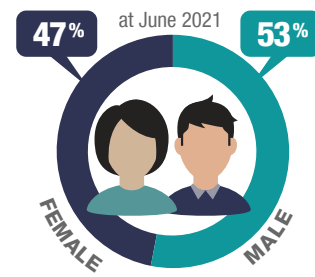
Corporate vs individual trustees



Median ages of members



Over 1.1 MILLION SMSF members



Average member balance over the five years to 30 June 2020 increased to

