

GUIDE

EXTERNAL

17 DECEMBER 2015

UNCLASSIFIED

FORMAT

AUDIENCE

DATE

CLASSIFICATION



Australian Government

Australian Taxation Office

DATA AND PAYMENT STANDARDS - ROLLOVER MESSAGE IMPLEMENTATION GUIDE

Published by the Commissioner of Taxation

Version 2.0

Release date: 17 December 2015

Applies from: October 2016



UNCLASSIFIED



For further information or questions,
email

SuperStreamStandards@ato.gov.au

VERSION CONTROL

Version	Release date	Operative from	Operative up to and including	Description of changes
1.0	9 January 2013	1 July 2013	11 June 2013	N/A
1.1	12 June 2013	1 July 2013	October 2016	<p>Updates to incorporate the RSA Data and Payment Standards 2013.</p> <p>Technical updates to schedules incorporating industry and internal review.</p> <p>Updates to align with release of new versions of taxonomy and schematron.</p>
2.0	17 December 2015	October 2016	Open	<p>The following new services are included:</p> <p>Successor fund transfers that align with ISAT</p> <p>Electronic Portability Form (EPF)</p> <p>Section 20C Notice</p> <p>Transactions to cater for KiwiSaver component</p> <p>Unclaimed Superannuation Money (USM) Rollover</p>

TABLE OF CONTENTS

Version Control.....	2
Table Of Contents	3
1. Introduction.....	5
1.1. Purpose.....	5
1.2. Scope.....	5
1.2.1 Global use of terms and data element names	5
1.2.2 Application of the Rollover MIG	6
2. Rollover Business Interaction	7
2.1 Rollover business interaction.....	7
2.2 Linking messages to the underlying transport mechanism	8
2.2.1 ConversationID	9
2.2.2 Service.....	9
2.2.3 Action.....	9
2.2.4 Part properties	9
2.2.5 ContextID.....	10
Service and Action Summary Table	10
3. XBRL Context Specifications.....	11
3.1 Context specification – message sender	11
3.2 Context specification – message receiver	12
3.3 Context specification – rollover payment	13
3.4 Context specification - member rollover transaction	15
3.5 TFN usage within context.....	17
3.6 Unique superannuation identifiers within context.....	17
4. Initiate Rollover Request Message Specification	18
4.1 Prerequisites	18
4.2 Message transport linkages.....	18
4.3 Message context summary.....	19
4.4 Message content tables	21
4.4.1 Message sender details.....	21
4.4.2 Message receiver details.....	23
4.4.3 Member rollover transaction details.....	23
4.4.4 TFN quoted indicator	26
4.4.5 Superannuation specific rollover details	27
5. Initiate Rollover Error Response Message Specification.....	28
5.1 Prerequisites	28
5.2 Message transport linkages.....	28
6. Electronic Portability Form Message Specification.....	30
6.1 Message transport linkages.....	30
6.2 Message context summary.....	31
6.3 Message content tables	31
7. Section 20C Notice.....	32
7.1 Message transport linkages.....	32
7.2 Message context summary.....	33
7.3 Message content tables	33
8. Section 20C Notice Error Response	34
8.1 Prerequisites	34
8.2 Message transport linkages.....	34
9. Rollover Transaction Request Message Specification	36
9.1 Prerequisites	36
9.2 Message transport linkages.....	36
9.3 Message context summary.....	38
9.4 Message content tables	39
9.4.1 Message sender details.....	39

9.4.2	Message receiver details	41
9.4.3	Member rollover transaction details	41
9.4.4	Fund payment details	46
9.5	Rollover payments message specification	48
10.	Rollover Transaction Outcome Response Message Specification	49
10.1	Prerequisites	49
10.2	Message transport linkages	49
11.	USM Rollover Message Specification	51
11.1	Message transport linkages	51
11.2	Message context summary	53
11.3	Message content tables	53
12.	USM Rollover Outcome Response Message Specification	54
12.1	Prerequisites	54
12.2	Message transport linkages	54
	Appendix A: Additional business rules	56

Note on terminology

The key words “MUST”, “MUST NOT”, “REQUIRED”, “SHALL”, “SHALL NOT”, “SHOULD”, “SHOULD NOT”, “RECOMMENDED”, “MAY”, and “OPTIONAL” in this document are to be interpreted as described in RFC 2119 <http://www.ietf.org/rfc/rfc2119.txt>. The use of the word “mandatory” is to be read as “MUST”.

1. INTRODUCTION

1.1. PURPOSE

- (a) The Rollover Message Implementation Guide (Rollover MIG) sets out the requirements for rollover message specifications and message payloads that an entity **MUST** use for rollovers to comply with the Superannuation Data and Payments Standards 2012 and the RSA Data and Payment Standards 2013 (the Standard).

Note: A reference to ‘the Standard’ in this document is a reference to whichever Standard is applicable to the entity for the transaction.

- (b) This MIG will be supplemented by Guidance Notes published by the ATO from time to time. Guidance Notes identified as candidates for inclusion in future versions of the standard should always be adhered to.

1.2. SCOPE

1.2.1 Global use of terms and data element names

- (a) A reference to a rollover includes a transfer.¹
- (b) If a rollover is being made to an Retirement Savings Accounts (RSA) provider, from an RSA provider or between RSA providers, a reference in a specification, requirement or table to a:
- (i) **superannuation fund member** or **member** is a reference to an **RSA holder** to the extent this is consistent with the RSA provider’s role in the rollover that is being undertaken;
 - (ii) **superannuation fund** or **fund** is a reference to an **RSA provider** to the extent this is consistent with the RSA provider’s role in the rollover that is being undertaken;
 - (iii) **transferring fund** or **receiving fund** is a reference to a **transferring RSA provider** or **receiving RSA provider** respectively and as consistent with the RSA provider’s role in the rollover that is being undertaken;
 - (iv) **unique superannuation identifier** is a reference to a **unique RSA identifier** to the extent this is consistent with the RSA provider’s role in the rollover that is being undertaken.
- (c) However, to avoid any doubt there is no change to any of the following system related terms within the document even if the entity is an RSA provider:
- (i) a data element name;

Example 1 - “SuperannuationFundDetails” is incorporated in a data element name. That same data element name is used if the entity is an RSA provider as it must remain consistent with the SBR Definitional Taxonomy.
 - (ii) a context name;

Example 2 – The “Member Rollover Transaction” context is a mandatory context of both the Initiate Rollover Request and rollover transaction request messages. This context is used if the entity is an RSA provider to provide contextual information about the RSA holder.
 - (iii) a typed dimension name;

Example 3 – The typed dimension “TransferringSuperannuationFundUniqueSuperannuationIdentifierDimension” is used

¹ The meaning of ‘rolled over’ and ‘transferred’ is included in subregulation 5.01(1) of the Superannuation Industry (Supervision) Regulations 1994.

in multiple context declarations. This dimension is used if the entity is an RSA provider to provide the unique RSA identifier.

1.2.2 Application of the Rollover MIG

- (a) Subject to paragraph (b), the Rollover MIG applies to:
- (i) rollovers between superannuation funds and / or RSA providers;
 - (ii) the Electronic Portability Form (EPF) sent by the ATO to notify a superannuation fund of a member's decision to rollover their whole superannuation balance to another superannuation fund;
 - (iii) Section 20C Notice sent by the ATO to a superannuation fund in relation to an account for a former temporary resident (FTR) to initiate a Unclaimed Superannuation Money (USM) Rollover to the ATO;
 - (iv) USM Rollovers to the ATO from superannuation funds and USM Rollovers to the superannuation funds from the ATO; and
 - (v) rollover transactions between Australian superannuation funds containing a KiwiSaver component.
- (b) The Rollover MIG does not apply to:
- (i) a rollover (an internal rollover) within a superannuation fund or RSA provider;

Note: an internal rollover, for example, between products within the same superannuation fund, may be handled by relevant accounting and registry entries.
 - (ii) in-specie rollovers which can be managed via a process deemed relevant by the entities concerned;
 - (iii) rollover amendments or cancellations which can be managed via a process deemed relevant by the entities concerned;
 - (iv) refunds of rollover payments or USM rollover payments which can be managed by a process deemed relevant by the entities concerned, apart from refunds associated with Rollover Transaction Outcome Response messages and USM Rollover Outcome Response messages;
 - (v) transfers to a successor fund as defined by *section 995-1* of the *Income Tax Assessment Act 1997*², and
 - (vi) self-managed superannuation funds (SMSF).

² Section 390-10 of Schedule 1 of the *Taxation Administration Act 1953* remains applicable to successor fund transfers and may require use of the Rollover MIG where an alternative is not agreed. Refer to the current version of the *Involuntary Superannuation Account Transfer Protocol*.

2. ROLLOVER BUSINESS INTERACTION

<i>Explanatory notes:</i>	
Superannuation fund member	The individual for whose benefit the money is being held and rolled over.
RSA holder	An individual who holds a Retirement Savings Account (RSA) with an RSA provider and who makes contributions, or on whose behalf contributions are made, to the RSA.
Superannuation fund	<p><u>Transferring superannuation fund</u> – the superannuation fund that originally holds the member’s interest and is paying an amount from that interest to another superannuation fund.</p> <p><u>Receiving superannuation fund</u> – the superannuation fund that is to receive the payment from the transferring superannuation fund and allocate the amount to the member’s interest in the receiving superannuation fund.</p>
Financial institutions	Any financial institution responsible for the management and transfer of money.
RSA provider	A financial institution that offers RSAs.

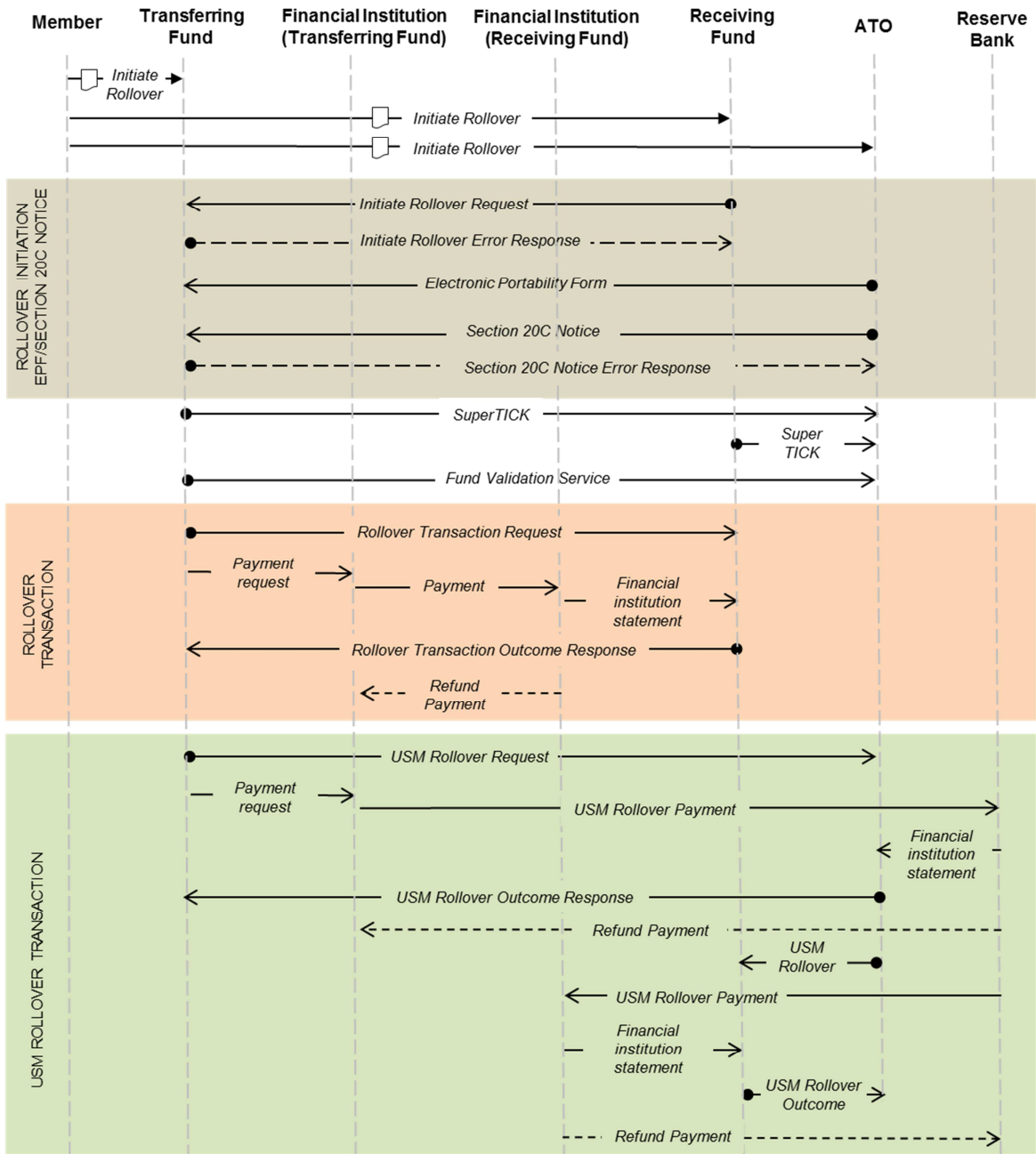
2.1 ROLLOVER BUSINESS INTERACTION

The diagram below illustrates the stakeholders and the message exchanges required to perform the member rollover business interaction. This is a holistic view which combines many possible rollover business scenarios³.

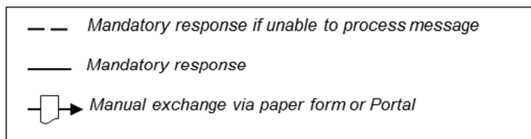
It sets out message interactions for:

- Initiate Rollover Request;
- Initiate Rollover Error Response;
- Electronic Portability Form;
- Section 20C Notice;
- Section 20C Notice Error Response;
- Rollover Transaction Request;
- Rollover Transaction Outcome Response;
- Unclaimed Superannuation Money Rollover;
- Unclaimed Superannuation Money Rollover Outcome Response; and
- Rollover Payment

³ Interactions with ATO validation services are shown for completeness but are not further defined in this MIG.



LEGEND:



2.2 LINKING MESSAGES TO THE UNDERLYING TRANSPORT MECHANISM

To ensure the efficient exchange and processing of messages, the underlying transport mechanism used MUST support the ability for the attributes defined in this section to accompany the messages.

2.2.1 ConversationID

- (a) The following pairs of messages **MUST** be linked via a shared value for the ConversationID attribute:
- (i) The Initiate Rollover Request and the related Initiate Rollover Error Response messages.
 - (ii) Section 20C Notice and the related Section 20C Notice Error Response messages.
 - (iii) The Rollover Transaction Request and the related Rollover Transaction Outcome Response messages.
The Rollover Transaction Request **SHOULD NOT** be assumed to share the same value for the ConversationID attribute as an Initiate Rollover Request / Electronic Portability Form message that triggered the rollover.
 - (iv) The Unclaimed Superannuation Money Rollover and the related Unclaimed Superannuation Money Rollover Outcome Response.
The Unclaimed Superannuation Money Rollover **SHOULD NOT** be assumed to share the same value for the ConversationID attribute as a Section 20C Notice that triggered the rollover.
- (b) The following convention **MUST** be used as the value of the ConversationID:
Rollover.{Sender ABN}.{sequence number}, where the full value is no longer than 80 characters and allowable characters are strictly limited to the following characters (0-9, a-z, A-Z, _, -, .).
- (c) It is the responsibility of the sender of the first message within an instance of an Initiate Rollover Request (including Electronic Portability Form and Section 20C Notice) and the rollover request (including Unclaimed Superannuation Money (USM) rollover) to allocate the ConversationID according to the above convention.
- (d) The ABN included in the ConversationID is not required to be validated by the receiver against other ABN references (e.g. the ABN included in the context specifications). The ConversationID is strictly used to link message interactions together.

2.2.2 Service

The value that **MUST** be used for the Service attribute is documented in the Service and Action Summary Table.

Note: the Service attribute provides a logical identifier for the interaction with the receiver targeted by a message.

2.2.3 Action

The value that **MUST** be used for the Action attribute is documented in the Service and Action Summary Table.

Note: The Action attribute provides a logical identifier for the step within the interaction (identified by the Service attribute) targeted by a message.

2.2.4 Part properties

The properties and values that **MUST** be used are documented in the Message Transport Linkages section of each message specification.

Note: Part properties support the efficient routing of business messages to their final destination without the need to examine the data contained inside the message. Part properties typically replicate key business facts, such as an ABN and a Unique Superannuation Identifier. Each property has a name and a value.

2.2.5 ContextID

Maximum length is 40 characters.

Note: It is recommended that ContextID values are kept to 20 or fewer characters to reduce complexity in processing. Allowed characters are as per the XBRL 2.1 Recommendation.

Service and Action Summary Table

Payload Content	Service Value	eb:Action Value
Initiate Rollover Request	"http://sbr.gov.au/service/Rollover/2.0"	"InitiateRolloverRequest".
Initiate Rollover Error Response	"http://sbr.gov.au/service/Rollover/2.0"	"InitiateRolloverErrorResponse"
Electronic Portability Form	"http://sbr.gov.au/service/Rollover/2.0"	"ElectronicPortabilityForm"
Section 20C Notice	"http://sbr.gov.au/service/Rollover/2.0"	"Section20CNotice"
Section 20C Notice Error Response	"http://sbr.gov.au/service/Rollover/2.0"	"Section20CNoticeErrorResponse"
Rollover Transaction Request	"http://sbr.gov.au/service/Rollover/2.0"	"RolloverTransactionRequest"
Rollover Transaction Outcome Response	"http://sbr.gov.au/service/Rollover/2.0"	"RolloverTransactionOutcomeResponse"
USM Rollover	"http://sbr.gov.au/service/Rollover/2.0"	"USMRolloverRequest"
USM Rollover Outcome Response	"http://sbr.gov.au/service/Rollover/2.0"	"USMRolloverOutcomeResponse"

3. XBRL CONTEXT SPECIFICATIONS

Explanatory Note:

- The following section defines the XBRL context declarations which will be used within the messages specified within this MIG.
- The rules relating to the optionality and cardinality of the context within a specific message will be defined in the relevant message specification section.

3.1 CONTEXT SPECIFICATION – MESSAGE SENDER

- The message sender is the organisational entity that submits the specific rollover message.
- There **MUST** be only one Message Sender context defined within a business document.
- If no Message Sender context is declared then error code SUPER.GEN.GEN.6 **MUST** be returned.
- If more than one Message Sender context is declared then error code SUPER.GEN.GEN.10 **MUST** be returned.
- The message sender context **MUST** conform with the specifications in the Message Sender Context Specification Table.

Message Sender Context Specification Table

Context Data Concept	Requirement	Instructions/Rules	Rule Imp.	Message code
Context Identifier	Mandatory	This is a unique identifier used to link the data element to a defined XBRL context. Recommend a meaningful code combined with a sequential number. For this context an example could be – SND01.	XBRL Standard will validate that this is present and unique.	N/A
Entity Identifier	Mandatory	This field must be set to the ABN of the party that is sending this document. 1. Must be a valid ABN in accordance to the ABN algorithm.	1. MIG.	1. SBR.GEN.GEN.1
Entity Identifier Scheme	Mandatory	This field must be set to http://www.abr.gov.au/abn	MIG.	SBR.GEN.GEN.14
Entity Segment	Mandatory	Explicit member dimension ReportPartyType ("ReportPartyTypeDimension") must be set to "MessageSender".	XBRL Standard will validate dimension domain value.	N/A
Period Date - Start Date	Mandatory	This is a mandatory item within the XBRL specification so it must be populated with a date and this MIG suggests setting both start and end date to the current date. The actual value will not be tested only whether it is present.	XBRL Standard will validate that this is present.	N/A
Period Date - End Date				

3.2 CONTEXT SPECIFICATION – MESSAGE RECEIVER

- (a) The message receiving party is the organisational entity that receives the specific rollover message for processing.
- (b) There **MUST** be only one Message receiver context defined within a business document.
- (c) If no Message receiver context is declared then error code SUPER.GEN.GEN.6 **MUST** be returned.
- (d) If more than one Message receiver context is declared then error code SUPER.GEN.GEN.10 **MUST** be returned.
- (e) The message receiver context **MUST** conform to the specifications in the Message Receiver Context Specification Table.

Message Receiver Context Specification Table

Context Data Concept	Requirement	Instructions/Rules	Rule Imp.	Message code
Context Identifier	Mandatory	This is a unique identifier used to link the data element to a defined XBRL context. Recommend a meaningful code combined with a sequential number. For this context an example could be – RCR01.	XBRL Standard will validate that this is present and unique.	N/A
Entity Identifier	Mandatory	This field must be set to the ABN of the party that will receive this document. 1. Must be valid ABN in accordance to the ABN algorithm.	1. MIG.	SBR.GEN.GEN.1
Entity Identifier Scheme	Mandatory	This field must be set to http://www.abr.gov.au/abn	MIG.	SBR.GEN.GEN.14
Entity Segment	Mandatory	Explicit member dimension ReportPartyType (“ReportPartyTypeDimension”) must be set to “MessageReceiver”.	XBRL Standard will validate dimension domain value.	N/A
Period Date - Start Date	Mandatory	This is a mandatory item within the XBRL specification so it must be populated with a date and this MIG suggests setting both start and end date to the current date. The actual value will not be tested only whether it is present.	The actual value will not be tested only whether it is present.	XBRL Standard will validate that this is present.
Period Date-End Date				

3.3 CONTEXT SPECIFICATION – ROLLOVER PAYMENT

- (a) This context is used to identify the payment details associated with the Rollover transaction.
- (b) There **MUST** be only one Rollover payment context defined within a business document.
- (c) If no Rollover payment context is declared then error code SUPER.GEN.GEN.6 **MUST** be returned.
- (d) If more than one Rollover payment context is declared then error code SUPER.GEN.GEN.10 **MUST** be returned.
- (e) The Rollover Payment context **MUST** conform to the specifications in the Rollover Payment Context Specification Table.

Rollover Payment Context Specification Table

Context Data Concept	Requirement	Instructions/Rules	Rule Imp.	Message code
Context Identifier	Mandatory	This is a unique identifier used to link the data element to a defined XBRL context. Recommend a meaningful code combined with a sequential number. For this context an example could be –FNDPYMNT01.	XBRL Standard will validate that this is present and unique.	N/A
Entity Identifier	Mandatory	This field must be set to the ABN of the Transferring Fund making the payment. 1. Must be a valid ABN in accordance to the ABN algorithm.	1. MIG.	1. SBR.GEN.GEN.1
Entity Identifier Scheme	Mandatory	This field must be set to http://www.abr.gov.au/abn	MIG.	SBR.GEN.GEN.14
Entity Segment	Mandatory	Explicit member dimension ReportPartyType (“ReportPartyTypeDimension”) must be set to “TransferringFund”.	XBRL Standard will validate that this is present	N/A
	Mandatory	Typed Dimension = “ReceivingSuperFundABNDimension” with a simple container = “Identifiers.AustralianBusinessNumber.Identifier” set to the ABN of the superannuation fund which will receive the payment associated with the rollover. 1. Must be a valid ABN in accordance to the ABN algorithm.	1. MIG.	1. SBR.GEN.GEN.1

Context Data Concept	Requirement	Instructions/Rules	Rule Imp.	Message code
	Optional	<p>Typed member dimension = "ReceivingSuperannuationFundUniqueSuperannuationIdentifierDimension" with a simple container = "SuperannuationFundDetails.UniqueSuperannuationIdentifier.Identifier" must be set to the unique superannuation identifier allocated to the Receiving Superannuation Product specified in this MIG (refer to Section 3.6).</p> <p>This dimension MUST be provided if the Receiving Fund has one or more products.</p> <p>If the Receiving Fund does not have products then this dimension MUST NOT be included within the Context declaration.</p> <p>1. Unique superannuation identifier must be known to the Receiving Fund identified within the ReceivingSuperFundABNDimension.</p> <p><i>See section 3.6 for more information about the unique superannuation identifier.</i></p>	1. MIG.	1. SUPER.GEN.GEN .2
Period Date - Start Date Period Date - End Date	Mandatory	<p>This is a mandatory item within the XBRL specification so it must be populated with a date and this MIG suggests setting both start and end date to the current date. The actual value will not be tested only whether it present.</p>	XBRL Standard will validate that this is present.	N/A

3.4 CONTEXT SPECIFICATION - MEMBER ROLLOVER TRANSACTION

- (a) This context is used to identify data elements relating to a member rollover transaction.
- (b) The member rollover transaction context MUST conform with the specifications in the Member Rollover Transaction Context Specification Table.

Member Rollover Transaction Context Specification Table

Context Data Concept	Requirement	Instructions/Rules	Rule Imp.	Message code
Context Identifier	Mandatory	This is a unique identifier used to link the data element to a defined XBRL context. Recommend a meaningful code combined with a sequential number. For this context an example could be – MBRROLLVR01.	XBRL Standard will validate that this is present and unique.	N/A
Entity Identifier	Mandatory	If the Superannuation Fund Member TFN is known then the TFN MUST be populated into the Entity Identifier. See section 3.5 for details on using the TFN as the Entity Identifier. 1. MUST be a valid TFN based on ATO algorithm. If the Member has chosen not to disclose their TFN to the Transferring or Receiving Fund then the Entity Identifier MUST be set to an identifier which will uniquely identify the Superannuation Fund Member within the instance document. This identifier is to be determined by the party producing the relevant message.	1. MIG.	1. SUPER.GEN.GEN.9
Entity Identifier Scheme	Mandatory	1. If the Entity Identifier is a TFN then this field must be set to http://www.ato.gov.au/tfn 2. If the Entity Identifier is a unique identifier provided by the party producing the message then this field must be set to http://www.sbr.gov.au/id NOTE: this value will determine the type of identifier used within the Entity Identifier hence it is critical that the correct Entity Identifier Scheme is provided. If the scheme is set to http://www.sbr.gov.au/id then this will indicate that the superannuation fund member has purposely not provided their TFN or the entity responsible for the message does not know their TFN. If the scheme is set to http://www.sbr.gov.au/id by mistake and the TFN was supplied then the TFN SHOULD be treated as not being supplied. 3. Maximum length is 20 characters. NOTE: Should the MemberID be used to populate this field, it is recommended that this value is kept to 16 or fewer characters to align with the account number reported on a Member Contribution Statement. It is recommended that only alpha-numeric characters are used to align with the account number reported on a Member Contribution Statement.	1. MIG 2. MIG 3. MIG	1 & 2. SBR.GEN.GEN.14 3. N/A
Entity Segment	Mandatory	Explicit member dimension ReportPartyType ("ReportPartyTypeDimension") must be set to "SuperFundMember".	XBRL Standard will validate that this is present.	N/A

Context Data Concept	Requirement	Instructions/Rules	Rule Imp.	Message code
	Mandatory	Typed Dimension = "TransferringSuperFundAllocatedMemberIDDimension" with a simple container = "SuperannuationFundDetails.MemberClient.Identifier" set to the Member ID allocated by the Transferring Fund to the member within the rollover. 1. Member ID must be known to the Transferring Fund.	1. This context is set by the Transferring Fund and can only be validated by the Transferring Fund so an error cannot be returned.	1. N/A
	Mandatory	Typed Dimension = "TransferringSuperFundABNDimension" with a simple container = "Identifiers.AustralianBusinessNumber.Identifier" set to the ABN of the superannuation fund who is the Transferor of the rollover. It MUST be set to the ABN of the ATO for a USM rollover from the ATO to a superannuation fund. 1. Must be a valid ABN based on ABN algorithm. 2. Must be the same Transferring Fund ABN defined within the Rollover Payment context.	1. MIG. 2. MIG.	1. SBR.GEN.GEN.1 2. SUPER.GEN.RLV R.3
	Optional	Typed Dimension = "TransferringSuperannuationFundUniqueSuperannuationIdentifierDimension" with simple container = "SuperannuationFundDetails.UniqueSuperannuationIdentifier.Identifier" must be set to the unique superannuation identifier of the superannuation product or the ATO (for USM Rollover from the ATO to a fund) from which the rollover has been sourced, specified in this MIG (refer to Section 3.6). This dimension MUST be provided if the Transferring Fund has one or more products. NOTE: If the Fund does not have products then this dimension MUST NOT be provided within the context declaration. 1. Must be a valid unique superannuation identifier within the Transferring Fund. <i>See section 3.6 for more information about the unique superannuation identifier.</i>	1. This context is set by the Transferring Fund and can only be validated by the Transferring Fund so an error cannot be returned.	1. N/A
	Mandatory	Typed Dimension = "ReceivingSuperFundABNDimension" with a simple container = "Identifiers.AustralianBusinessNumber.Identifier" set to the ABN of the superannuation fund who is the Receiver of the rollover. It MUST be set to the ABN of the ATO for a USM rollover from a superannuation fund to the ATO. 1. Must be a valid ABN based on ABN algorithm. 2. When used in the Rollover Transaction Request message this MUST be the same Receiving Fund ABN defined within the Rollover Payment context.	1. MIG. 2. MIG.	1. SBR.GEN.GEN.1 2. SUPER.GEN.RLV R.3

Context Data Concept	Requirement	Instructions/Rules	Rule Imp.	Message code
	Optional	<p>Typed Dimension = "ReceivingSuperannuationFundUniqueSuperannuationIdentifierDimension" with simple container = "SuperannuationFundDetails.UniqueSuperannuationIdentifier.Identifier" must be set to the unique superannuation identifier allocated to the Receiving Superannuation Product or the ATO (for USM Rollover from a fund to ATO) specified in this MIG (refer to Section 3.6).</p> <p>This dimension MUST be provided if the Receiving Fund has one or more products.</p> <p>NOTE: If the Fund does not have products then this dimension MUST NOT be provided within the Context Declaration.</p> <p>1. Must be a valid unique superannuation identifier within the Receiving Fund.</p> <p>2. When used in the Rollover Transaction Request message this MUST be the same Receiving Fund ABN defined within the Rollover Payment context.</p> <p><i>See section 3.6 for more information about the unique superannuation identifier.</i></p>	<p>1. MIG.</p> <p>2. MIG.</p>	<p>1. SUPER.GEN.GEN .2</p> <p>2. SUPER.GEN.RLV R.4</p>
Period Date - Start Date	Mandatory	<p>This is a mandatory item within the XBRL specification so it must be populated with a date and this MIG suggests setting both start and end date to the current date. The actual value will not be tested only whether it is present.</p>	<p>XBRL Standard will validate that this is present and unique.</p>	<p>1. N/A</p>
Period Date - End Date				

3.5 TFN USAGE WITHIN CONTEXT

- (a) If the member has elected not to supply their TFN then the data element or the TFN cannot be validated, the Identifiers.TaxFileNumberNotProvided.Indicator **MUST** be set to TRUE which formally informs the superannuation fund that the member has chosen not to supply their TFN.
- (b) If the member has supplied their TFN then the data element, Identifiers.TaxFileNumberNotProvided.Indicator, **MUST** be set to FALSE.

3.6 UNIQUE SUPERANNUATION IDENTIFIERS WITHIN CONTEXT

- (a) If there is an obligation imposed on an entity to use a unique superannuation identifier, one of the following two conventions **MUST** be followed to generate the unique superannuation identifier:
 - (i) the entity’s ABN followed by three (3) numerals; or
 - (ii) another kind of unique identifier approved in writing by the Commissioner of Taxation.
- (b) A superannuation fund may use either method to identify their individual products.

4. INITIATE ROLLOVER REQUEST MESSAGE SPECIFICATION

Explanatory notes:

- The Standard is mandatory for the messages from the receiving or transferring fund for fund initiated rollovers.
- The following sections describe the contextualisation and the data elements required to be supplied within the XBRL instance document.

4.1 PREREQUISITES

The member **MUST** have provided accurate and complete information to the message sender to enable the Initiate Rollover Request message to be formulated according to this document and enable the message to be successfully processed.

4.2 MESSAGE TRANSPORT LINKAGES

- (a) The Initiate Rollover Request **MUST** be accompanied by the attributes set out in the Initiate Rollover Request – Message Transport Linkage Attributes Table.
- (b) These attributes apply in addition to the rules set out in section 2 of this document and the document titled Data and Payment Standards - Message Orchestration and Profiles as referred to in Schedule 5 to the Standard.

Initiate Rollover Request – Message Transport Linkage Attributes Table

Linkage Attribute	Instructions / Rules	Rule Imp.	Message Code
To	This value MUST identify the entity undertaking the "TransferringFund" role or the gateway of the Transferring Fund of the Initiate Rollover process. Where the entity can be identified by a USI, a USI MUST be used as the TO PartyID, otherwise the ABN of the entity MUST be used.	N/A	N/A
From	This value MUST identify the entity undertaking the "ReceivingFund" role or the gateway of the Receiving Fund of the Initiate Rollover process. Where the entity can be identified by a USI, a USI MUST be used as the FROM PartyID, otherwise the ABN of the entity MUST be used.	N/A	N/A
Property	1. Mandatory. 2. Property name MUST be "TargetABN". 3. This MUST be the same value as that provided in the TransferringSuperFundABNDimension within the Member Rollover Transaction context for this message.	1.MIG 2.MIG 3.MIG	1. N/A 2 and 3: SUPER.GEN.GEN.20

Property	<p>1. Conditional. Mandatory if a value has been provided for the TransferringSuperannuationFundUniqueSuperannuationIdentifierDimension within the Member Rollover Transaction context for this message.</p> <p>2. Property name MUST be "TargetUniqueSuperannuationIdentifier".</p> <p>3. This MUST be the same value as that provided in the TransferringSuperannuationFundUniqueSuperannuationIdentifierDimension within the Member Rollover Transaction context for this message.</p>	<p>1.MIG</p> <p>2.MIG</p> <p>3.MIG</p>	<p>1. N/A</p> <p>2 and 3: SUPER.GEN.GEN.20</p>
Property	<p>1. Mandatory.</p> <p>2. Property name MUST be "SourceABN".</p> <p>3. This value MUST be set to the ABN of the Party to whom any Initiate Rollover Error Response messages will be routed.</p>	<p>1.MIG</p> <p>2.MIG</p> <p>3.MIG</p>	<p>1. N/A</p> <p>2 and 3: SUPER.GEN.GEN.20</p>
Property	<p>1. Optional. This property SHOULD be provided where the sender requires that the routing of any Initiate Rollover Error Response messages is based on a particular Unique Superannuation Identifier.</p> <p>2. Property name MUST be "SourceUniqueSuperannuationIdentifier".</p> <p>3. This value MUST be set to the Unique Superannuation Identifier upon which routing of Initiate Rollover Error Response messages is based.</p>	<p>1.MIG</p> <p>2.MIG</p> <p>3.MIG</p>	<p>1. N/A</p> <p>2 and 3: SUPER.GEN.GEN.20</p>
Property	<p>1. Mandatory.</p> <p>2. Property name MUST be "RecordCount".</p> <p>3. This value will be the total number of records within the associated payload.</p> <p>A record refers to a single member XBRL context. In the case of IRR this is the Member Rollover Transaction context.</p> <p>This value MUST be populated by the party that is generating the message.</p>	<p>1.MIG</p> <p>2.MIG</p> <p>3.MIG</p>	<p>1. N/A</p> <p>2. SUPER.GEN.GEN.20</p> <p>3. N/A</p>

4.3 MESSAGE CONTEXT SUMMARY

- (a) The contextualisation and the associated rules required for the Initiate Rollover Request message MUST conform to the specifications in the Initiate Rollover Request Context Table below.
- (b) The Context Specification section (see section 3 of this document) contains the development requirements of each context identified within the Context Specification column.

- (c) If any specifications in the Initiate Rollover Request Context Table contradict any specifications within the relevant Context Specification in section 3 of this document then the specifications below take precedence.

Initiate Rollover Request Context Summary Table

Context Spec	Instructions / Rules	Rule Imp.	Message Code
Message Sender	1. Mandatory and MUST only be one context declaration.	1. MIG	1. SUPER.GEN.GEN.6 (missing Context) or SUPER.GEN.GEN.10 (too many Contexts)
Message Receiver	1. Mandatory and MUST only be one context declaration.		
Member Rollover Transaction	1. Mandatory and MUST have at least 1 context declaration but MAY have many.	1. MIG	1. SUPER.GEN.GEN.6

4.4 MESSAGE CONTENT TABLES

Explanatory Notes:

- The Message Content Tables set out the data elements which are to be supplied within the Initiate Rollover message.
- The data elements have been grouped by context definitions.
- Unless specifically provided for there is only to be one instance of XBRL facts/tuples reported within this context.

4.4.1 Message sender details

The message sender data content of an Initiate Rollover Request message MUST conform to the specifications in the Initiate Rollover Request – Message Sender Data Content Table.

Initiate Rollover Request – Message Sender Data Content Table

Context – message sender				
Seq no.	XBRL Fact	Instructions / Rules	Rule Imp.	Message Code
1.	OrganisationName1.02.00 (Tuple)	1. Mandatory. 2. Must only have one occurrence.	1. MIG 2. MIG	1. SUPER.GEN.GEN.4 2. SUPER.GEN.GEN.8
1.1.	OrganisationNameDetails.OrganisationalNameType.Code	1. Mandatory. 2. Must be set to “MN”.	1. MIG 2. MIG	1. SUPER.GEN.GEN.4 2. SUPER.GEN.GEN.5
1.2.	OrganisationNameDetails.OrganisationalName.Text	1. Mandatory.	1. MIG	1. SUPER.GEN.GEN.4
2.	PersonStructuredName1.02.00 (Tuple)	1. Mandatory. 2. Must only have one occurrence.	1. MIG 2. MIG	1. SUPER.GEN.GEN.4 2. SUPER.GEN.GEN.8
2.1.	PersonNameDetails.FamilyName.Text	1. Mandatory. See Appendix A for additional business rules associated with this	1. MIG	1. SUPER.GEN.GEN.4

Context – message sender				
Seq no.	XBRL Fact	Instructions / Rules	Rule Imp.	Message Code
		data element.		
2.2.	PersonNameDetails.GivenName.Text	1. Mandatory.	1. MIG	1. SUPER.GEN.GEN.4
2.3.	PersonNameDetails.OtherGivenName.Text	1. Optional.	1. MIG	1. N/A
2.4.	PersonNameDetails.Position.Text	1. SBR Common Module Element which is not relevant to this message. It is not required and will be ignored if provided.	1. N/A	1. N/A
3.	ElectronicContactElectronicMail1.02.00 (Tuple)	1. Mandatory. 2. Must only have one occurrence.	1. MIG 2. MIG	1. SUPER.GEN.GEN.4 2. SUPER.GEN.GEN.8
3.1.	ElectronicContact.ElectronicMail.Usage.Code	1. Mandatory. 2. Must be set to “03” for Contact.	1. MIG 2. MIG	1. SUPER.GEN.GEN.4 2. SUPER.GEN.GEN.5
3.2.	ElectronicContact.ElectronicMail.Address.Text	1. Mandatory.	1. MIG	1. SUPER.GEN.GEN.4
4.	ElectronicContactTelephone1.02.00 (Tuple)	1. Mandatory. 2. Must only have one occurrence.	1. MIG 2. MIG	1. SUPER.GEN.GEN.4 2. SUPER.GEN.GEN.8
4.1.	ElectronicContact.Telephone.Usage.Code	1. Mandatory. 2. Must be set to “03” for Contact.	1. MIG 2. MIG	1. SUPER.GEN.GEN.4 2. SUPER.GEN.GEN.5
4.2.	ElectronicContact.Telephone.ServiceLine.Code	1. Mandatory. 2. Valid values are “01” for Mobile or “02” for Landline or fixed line.	1. MIG 2. MIG	1. SUPER.GEN.GEN.4 2. SUPER.GEN.GEN.5
4.3.	ElectronicContact.Telephone.Area.Code	1. Optional.	1. MIG	1. N/A

Context – message sender				
Seq no.	XBRL Fact	Instructions / Rules	Rule Imp.	Message Code
4.4.	ElectronicContact.Telephone.Minimal.Number	1. Mandatory.	1. MIG	1. SUPER.GEN.GEN.4

4.4.2 Message receiver details

The message receiver data content of an Initiate Rollover Request message MUST conform with the specifications in the Initiate Rollover Request – Message Receiver Data Content Table.

Initiate Rollover Request – Message Receiver Data Content Table

Context – message receiver				
Seq no.	XBRL Fact	Instructions / Rules	Rule Imp.	Message Code
1.	OrganisationName1.02.00 (Tuple)	1. Mandatory. 2. Must only have one occurrence.	1. MIG 2. MIG	1. SUPER.GEN.GEN.4 2. SUPER.GEN.GEN.8
1.1.	OrganisationNameDetails.OrganisationalNameType.Code	1. Mandatory. 2. Must be set to “MN”.	1. MIG 2. MIG	1. SUPER.GEN.GEN.4 2. SUPER.GEN.GEN.5
1.2.	OrganisationNameDetails.OrganisationalName.Text	1. Mandatory.	1. MIG	1. SUPER.GEN.GEN.4

4.4.3 Member rollover transaction details

The member rollover transaction data content of an Initiate Rollover Request message MUST conform with the specifications in the Initiate Rollover Request – Member Rollover Transaction Data Content Table.

Initiate Rollover Request – Member Rollover Transaction Data Content Table

Context – Member Rollover Transaction				
Seq No.	XBRL Fact	Instructions / Rules	Rule Imp.	Message Code
1.	PersonStructuredName1.02.00 (Tuple)	1. Mandatory. 2. Must only have one occurrence.	1. MIG 2. MIG	1. SUPER.GEN.GEN.4 2. SUPER.GEN.GEN.8
1.1.	PersonNameDetails.FamilyName.Text	1. Mandatory. See Appendix A for additional business rules associated with this data element.	1. MIG	1. SUPER.GEN.GEN.4
1.2.	PersonNameDetails.GivenName.Text	1. Mandatory.	1. MIG	1. SUPER.GEN.GEN.4
1.3.	PersonNameDetails.OtherGivenName.Text	1. Optional.	1. MIG	1. N/A
1.4.	PersonNameDetails.Position.Text	1. SBR Common Module Element which is not relevant to this message. It is not required and will be ignored if provided.	1. MIG	1. N/A
2.	PersonDemographicDetails.Sex.Code	1. Mandatory.	1. MIG	1. SUPER.GEN.GEN.4
3.	PersonDemographicDetails.Birth.Date	1. Mandatory.	1. MIG	1. SUPER.GEN.GEN.4
4.	AddressDetails3.02.01 (Tuple)	1. Mandatory. 2. Must only have one occurrence.	1. MIG 2. MIG	1. SUPER.GEN.GEN.4 2. SUPER.GEN.GEN.8
4.1.	AddressDetails.Usage.Code	1. Mandatory 2. MUST be set to “RES” if residential address is known 3. If residential address is not known MUST be set to “POS”	1. MIG 2. MIG 3. MIG	1. SUPER.GEN.GEN.4 2. SUPER.GEN.GEN.5 3. SUPER.GEN.GEN.5
4.2.	AddressDetails.Line1.Text	1. Mandatory.	1. MIG	1. SUPER.GEN.GEN.4
4.3.	AddressDetails.Line2.Text	1. Optional.	1. MIG	1. N/A
4.4.	AddressDetails.Line3.Text	1. Optional.	1. MIG	1. N/A

Context – Member Rollover Transaction				
Seq No.	XBRL Fact	Instructions / Rules	Rule Imp.	Message Code
4.5.	AddressDetails.Line4.Text	1. Optional.	1. MIG	1. N/A
4.6.	AddressDetails.LocalityName.Text	1. Mandatory. 2. Maximum length 50 characters	1. MIG 2. MIG	1. SUPER.GEN.GEN.4 2. SUPER.GEN.GEN.5
4.7.	AddressDetails.Postcode.Text	1. Conditional – if AddressDetails.Country.Code is “au” then this field is mandatory.	1. MIG	1. SUPER.GEN.GEN.7
4.8.	AddressDetails.StateOrTerritory.Code	1. Conditional – if AddressDetails.Country.Code is “au” then this field is mandatory.	1. MIG	1. SUPER.GEN.GEN.7
4.9.	AddressDetails.Country.Code	1. Mandatory.	1. MIG	1. SUPER.GEN.GEN.4
5.	Identifiers.TaxFileNumberNotProvided.Indicator	1. Mandatory. <i>See 4.4.4 for business rules.</i>	1. MIG	1. SUPER.GEN.GEN.4
6.	SuperannuationRollover.TransferWholeBalance.Indicator	1. Mandatory “true” = Rollover entire balance. “false” = Rollover amount specified. For Electronic Portability Form (EPF) and Section 20C Notice this value MUST be set to “true”.	1. MIG	1. SUPER.GEN.GEN.4
7.	SuperannuationRollover.Requested.Amount	1. Conditional - Must be provided if the Transfer Whole Balance Indicator is set to “false”.	1. MIG	1. SUPER.GEN.RLVR.1
8.	SuperannuationFundDetails.MemberClient.Identifier	1. Optional – member ID allocated by the Receiving Fund. 2. Maximum length is 20 characters. Note: It is recommended that this value is kept to 16 or fewer characters to align with the member account number reported on a Member Contribution	1. MIG 2. MIG	1. N/A 2. SUPER.GEN.GEN.5

Context – Member Rollover Transaction				
Seq No.	XBRL Fact	Instructions / Rules	Rule Imp.	Message Code
		Statement.		
9.	SuperannuationRolloverOtherDetails.02.00 (Tuple)	1. Optional - zero to many <i>See 4.4.5 for an explanation.</i>	1. MIG	1. N/A
9.1.	SuperannuationRollover.OtherDetails.Text	1. Mandatory	1. MIG	1. SUPER.GEN.GEN.4
9.2.	SuperannuationRollover.OtherDetails.Description	1. Mandatory	1. MIG	1. SUPER.GEN.GEN.4

4.4.4 TFN quoted indicator

Explanatory Notes:

- The primary intent of this data element is to enable the transferring fund to clearly communicate the member's intentions with supplying their TFN to the superannuation fund.
- The rule in paragraph (c) is because the TFN quoted indicator is tightly coupled with the entity identifier used to identify the member.

- (a) If the member is providing their TFN to the fund then Identifiers.TaxFileNumberNotProvided.Indicator MUST be set to FALSE.
- (b) If the member has elected NOT to supply their TFN to the fund then Identifiers.TaxFileNumberNotProvided.Indicator MUST be set to TRUE.
- (c) The error code SUPER.GEN.GEN.1 MUST be returned if:
 - (i) the Identifiers.TaxFileNumberNotProvided.Indicator is set to FALSE and the Entity Identifier Scheme of the linked context declaration is equal to <http://www.sbr.gov.au/id>, or
 - (ii) the Identifiers.TaxFileNumberNotProvided.Indicator is set to TRUE and the Entity Identifier Scheme of the linked context declaration is equal to <http://www.ato.gov.au/tfn>.

4.4.5 Superannuation specific rollover details

Explanatory Notes:

- The generic tuple **SuperannuationRolloverOtherDetails** provides a generic data structure, which can be used to supply specific amounts and details defined by an associated description that not otherwise defined within the SBR Taxonomies.
- (a) If a superannuation fund or the ATO is required to provide rollover amounts and/or other details which are not defined within the SBR Taxonomies, the generic tuple **SuperannuationRolloverOtherDetails** MAY be used, but its usage MUST be defined by the ATO.
- (b) The **SuperannuationRolloverOtherDetails** tuples MUST NOT be used if that rollover amount or additional information is supported by a data element or contextual information defined within the Standard.
- (c) The ATO will stipulate any implementation through Guidance notes where appropriate.

5. INITIATE ROLLOVER ERROR RESPONSE MESSAGE SPECIFICATION

Explanatory Notes:

- This message is used when an Initiate Rollover Request (IRR) cannot be processed.
- There is NO XBRL business document contained within this message.
- Additional rules that must be followed in sending error messages are set out in the document titled *Data and Payment Standards – Error Code Management* as referred to in Schedule 6 to the Standard.

5.1 PREREQUISITES

- (a) This message **MUST** be sent from the transferring fund to the sender of the Initiate Rollover Request message if the Initiate Rollover Request message could not be processed (either fully or partially).

Note: If the Initiate Rollover Request message is processed successfully then this message will not be sent. If this message is not sent, then the sender of the Initiate Rollover request message may assume it has been processed successfully.

- (b) This message **MAY** be sent:
- (i) as a single response to an Initiate Rollover Request for all errors/warnings discovered, once processing is complete for all members included in the Initiate Rollover Request; or
 - (ii) multiple times for a single Initiate Rollover Request, for any subset of errors/warnings discovered during processing of the Initiate Rollover Request.

Initiate Rollover Request Error Response Message Structure Table

Initiate Rollover Request Error Response	Message Content
Initiate Rollover Request processed successfully	No response required if the Initiate Rollover Request is processed successfully.
Initiate Rollover Request unable to be processed	The appropriate error message MUST be provided to indicate that the message cannot be processed (either fully or partially).

5.2 MESSAGE TRANSPORT LINKAGES

- (a) An Initiate Rollover Request Error / Warning Response **MUST** be accompanied by the attributes set out in the Initiate Rollover Error Response – Message Transport Linkage Attributes Table.
- (b) These attributes apply in addition to the rules set out in section 2 of this document and the document titled *Data and Payment Standards - Message Orchestration and Profiles* as referred to in Schedule 5 to the Standard.

Initiate Rollover Error Response – Message Transport Linkage Attributes Table

Linkage Attribute	Instructions / Rules	Rule Imp.	Message Code
To	This value MUST be set to the same value as that provided in the FROM field for the associated Initiate Rollover Request message.	N/A	N/A
From	This value MUST be set to the same value as that provided in the TO field for the associated Initiate Rollover Request message.	N/A	N/A
Property	<p>1. Mandatory.</p> <p>2. Property name MUST be "TargetABN".</p> <p>3. This MUST be the same value as that provided in the SourceABN property of the associated Initiate Rollover Request message.</p>	<p>1.MIG</p> <p>2.MIG</p> <p>3.MIG</p>	<p>1. N/A</p> <p>2 and 3: SUPER.GEN.GEN.20</p>
Property	<p>1. Conditional. Mandatory if the associated Initiate Rollover Request message carries a SourceUniqueSuperannuationIdentifier property.</p> <p>2. Property name MUST be "TargetUniqueSuperannuationIdentifier".</p> <p>3. This MUST be the same value as that provided in the SourceUniqueSuperannuationIdentifier property of the associated Initiate Rollover Request message.</p> <p>This property SHOULD NOT be provided if the SourceUniqueSuperannuationIdentifier property of the associated Initiate Rollover Request message is not present.</p>	<p>1.MIG</p> <p>2.MIG</p> <p>3.MIG</p>	<p>1. N/A</p> <p>2 and 3: SUPER.GEN.GEN.20</p>

6. ELECTRONIC PORTABILITY FORM MESSAGE SPECIFICATION

Explanatory notes:

- The Electronic Portability Form (EPF) is sent by the ATO to notify a superannuation fund, RSA provider or an intermediary of a member's election to rollover their superannuation balance.
- There is no automated business response message to an Electronic Portability Form.

If a registered superannuation entity experiences errors with the message content returned in the XBRL message for Electronic Portability Form, the fund must contact the transferring member directly.

If a registered superannuation entity experiences errors with the receipt or validation of the message they should contact the ATO at SuperCRT@ato.gov.au

6.1 MESSAGE TRANSPORT LINKAGES

Linkage Attribute	Instructions / Rules	Rule Imp.	Message Code
To	This value MUST identify the entity undertaking the "TransferringFund" role, or the gateway of the Transferring Fund of the Rollover process. Where the entity can be identified by a USI, a USI MUST be used as the TO PartyID, otherwise the ABN of the entity MUST be used.	N/A	N/A
From	This will be the ABN of the ATO.	N/A	N/A
Property	<ol style="list-style-type: none"> 1. Mandatory. 2. Property name MUST be "TargetABN". 3. This MUST be the same value as that provided in the TransferringSuperFundABNDimension within the Member Rollover Transaction context for this message. 	1.MIG 2.MIG 3.MIG	1. N/A 2. SUPER.GEN.GEN .20 3. N/A
Property	<ol style="list-style-type: none"> 1. Conditional. Mandatory if a value has been provided for the TransferringSuperannuationFundUniqueSuperannuationIdentifierDimension within the Member Rollover Transaction context for this message. 2. Property name MUST be "TargetUniqueSuperannuationIdentifier". 3. This MUST be the same value as that provided in the TransferringSuperannuationFundUniqueSuperannuationIdentifierDimension within the Member Rollover Transaction context for this message. 	1.MIG 2.MIG 3.MIG	1. N/A 2 and 3 SUPER.GEN.GEN .20

Property	<ol style="list-style-type: none"> 1. Mandatory. 2. Property name MUST be "SourceABN". 3. This value MUST be set to the ABN of the Party undertaking the "ReceivingFund" role of the Rollover process. 	<ol style="list-style-type: none"> 1.MIG 2.MIG 3.MIG 	<ol style="list-style-type: none"> 1. N/A 2 and 3 SUPER.GEN.GEN .20
Property	<ol style="list-style-type: none"> 1. Optional. This property will designate the Unique Superannuation Identifier into which the member has requested that their benefit be rolled over. 2. Property name MUST be "SourceUniqueSuperannuationIdentifier". 3. This value MUST be set to the Unique Superannuation Identifier of the Party undertaking the "ReceivingFund" role of the Rollover process. 	<ol style="list-style-type: none"> 1.MIG 2.MIG 3.MIG 	<ol style="list-style-type: none"> 1. N/A 2 and 3 SUPER.GEN.GEN .20
Property	<ol style="list-style-type: none"> 1. Mandatory. 2. Property name MUST be "RecordCount". 3. This value will be the total number of records within the associated payload. <p>A record refers to a single member XBRL context. In the case of EPF this is the Member Rollover Transaction context.</p> <p>This value MUST be populated by the ATO.</p>	<ol style="list-style-type: none"> 1.MIG 2.MIG 3.MIG 	<ol style="list-style-type: none"> 1. N/A 2. SUPER.GEN.GEN .20 3. N/A

6.2 MESSAGE CONTEXT SUMMARY

The context specifications to be used in this message are identical to those specified in Section 4.3 Initiate Rollover Request Message Context Summary.

6.3 MESSAGE CONTENT TABLES

The message content tables to be used in this message are identical to those specified in Section 4.4 Initiate Rollover Request Message Content Tables.

7. SECTION 20C NOTICE

Explanatory notes:

- The ATO issues a Section 20C Notice to all superannuation funds reported as holding an account for a former temporary resident. The superannuation fund is then required to report the error of the Section 20C Notice.
- The following sections describe the contextualisation and the data elements required to be supplied within the XBRL instance document.

7.1 MESSAGE TRANSPORT LINKAGES

Linkage Attribute	Instructions / Rules	Rule Imp.	Message Code
To	This value MUST identify the entity undertaking the "TransferringFund" role, or the gateway of the Transferring Fund of the Rollover process. Where the entity can be identified by a USI, a USI MUST be used as the TO PartyID, otherwise the ABN of the entity MUST be used.	N/A	N/A
From	This will be the ABN of the ATO.	N/A	N/A
Property	1. Mandatory. 2. Property name MUST be "TargetABN". 3. This MUST be the same value as that provided in the TransferringSuperFundABNDimension within the Member Rollover Transaction context for this message.	1.MIG 2.MIG 3.MIG	1. N/A 2. SUPER.GEN.GEN .20 3. N/A
Property	1. Conditional. Mandatory if a value has been provided for the TransferringSuperannuationFundUniqueSuperannuationIdentifierDimension within the Member Rollover Transaction context for this message. 2. Property name MUST be "TargetUniqueSuperannuationIdentifier". 3. This MUST be the same value as that provided in the TransferringSuperannuationFundUniqueSuperannuationIdentifierDimension within the Member Rollover Transaction context for this message.	1.MIG 2.MIG 3.MIG	1. N/A 2 and 3 SUPER.GEN.GEN .20
Property	1. Mandatory. 2. Property name MUST be "SourceABN". 3. This value MUST be set to the ABN of ATO.	1.MIG 2.MIG 3.MIG	1. N/A 2 and 3 SUPER.GEN.GEN .20

Property	<p>1. Optional. This property will designate the Unique Superannuation Identifier into which the member has requested that their benefit be rolled over.</p> <p>2. Property name MUST be "SourceUniqueSuperannuationIdentifier".</p> <p>3. This value MUST be set to the Unique Superannuation Identifier of the Party undertaking the "ReceivingFund" role of the Rollover process.</p>	<p>1.MIG</p> <p>2.MIG</p> <p>3.MIG</p>	<p>1. N/A</p> <p>2 and 3 SUPER.GEN.GEN .20</p>
Property	<p>1. Mandatory.</p> <p>2. Property name MUST be "RecordCount".</p> <p>3. This value will be the total number of records within the associated payload.</p> <p>A record refers to a single member XBRL context. In the case of Section 20C Notice, this is the Member Rollover Transaction context.</p> <p>This value MUST be populated by the ATO.</p>	<p>1.MIG</p> <p>2.MIG</p> <p>3.MIG</p>	<p>1. N/A</p> <p>2. SUPER.GEN.GEN .20</p> <p>3. N/A</p>

7.2 MESSAGE CONTEXT SUMMARY

The context specifications to be used in this message are identical to those specified in Section 4.3 Initiate Rollover Request Message Context Summary.

7.3 MESSAGE CONTENT TABLES

The message content tables to be used in this message are identical to those specified in Section 4.4 Initiate Rollover Request Message Content Tables.

8. SECTION 20C NOTICE ERROR RESPONSE

Explanatory Notes:

- This message is used when a Section 20C Notice cannot be processed.
- There is NO XBRL business document contained within this message.
- Additional rules that must be followed in sending error messages are set out in the document titled *Data and Payment Standards – Error Code Management* as referred to in Schedule 6 to the Standard.

8.1 PREREQUISITES

- (a) This message **MUST** be sent from the transferring fund to the ATO if the Section 20C Notice message could not be processed.
- (b) The relevant error messages will be provided to indicate that the Section 20C Notice cannot be processed (either fully or partially).
- (c) This message **MAY** be sent:
 - (i) as a single response to an Section 20C Notice for all errors discovered, once processing is complete for all members included in the Section 20C Notice; or
 - (ii) multiple times for a single Section 20C Notice, for any subset of errors discovered during processing of the Section 20C Notice.

Section 20C Notice Error Response Message Structure Table

Section 20C Notice Error Response	Message Content
Section 20C Notice processed successfully	No error response required if the Section 20C Notice is processed successfully.
Section 20C Notice unable to be processed	The appropriate error message will be provided to indicate that the message cannot be processed (either fully or partially).

8.2 MESSAGE TRANSPORT LINKAGES

- (c) A Section 20C Notice Error Response **MUST** be accompanied by the attributes set out in the Section 20C Notice Error Response – Message Transport Linkage Attributes Table.
- (d) These attributes apply in addition to the rules set out in section 2 of this document and the document titled *Data and Payment Standards - Message Orchestration and Profiles* as referred to in Schedule 5 to the Standard.

Section 20C Notice Error Response – Message Transport Linkage Attributes Table

Linkage Attribute	Instructions / Rules	Rule Imp.	Message Code
To	This value MUST be set to the same value as that provided in the FROM field for the associated Section 20C Notice message.	N/A	N/A
From	This value MUST be set to the same value as that provided in the TO field for the associated Section 20C Notice message.	N/A	N/A
Property	<p>1. Mandatory.</p> <p>2. Property name MUST be "TargetABN".</p> <p>3. This MUST be the same value as that provided in the SourceABN property of the associated Section 20C Notice request message.</p>	<p>1.MIG</p> <p>2.MIG</p> <p>3.MIG</p>	<p>1. N/A</p> <p>2 and 3: SUPER.GEN.GEN.20</p>
Property	<p>1. Conditional. Mandatory if the associated Section 20C Notice request message carries a SourceUniqueSuperannuationIdentifier property.</p> <p>2. Property name MUST be "TargetUniqueSuperannuationIdentifier".</p> <p>3. This MUST be the same value as that provided in the SourceUniqueSuperannuationIdentifier property of the associated Section 20C Notice request message.</p> <p>This property SHOULD NOT be provided if the SourceUniqueSuperannuationIdentifier property of the associated Section 20C Notice request message is not present.</p>	<p>1.MIG</p> <p>2.MIG</p> <p>3.MIG</p>	<p>1. N/A</p> <p>2 and 3: SUPER.GEN.GEN.20</p>

9. ROLLOVER TRANSACTION REQUEST MESSAGE SPECIFICATION

Explanatory Notes:

- The Rollover Transaction Request message is always issued by the transferring fund or an intermediary acting on behalf of the transferring fund to a receiving fund or the intermediary acting on behalf of the receiving fund.
- This message has been designed to enable simple fund to fund interactions and more complex administrator to administrator interactions which involve multiple individual rollovers between the transferring and receiving fund.
- The Rollover Transaction Request message has been designed based on the key principle that there **MUST** be a one-to-one relationship between a payment and a Rollover Transaction Request Message (that is, a Rollover Transaction Request message **MUST** only contain data relating to one payment to a financial institution, and a payment **MUST** be in relation to a single Rollover Transaction Request message).
- The Rollover Transaction Message has been designed to cater for rollover payments made at either the Fund ABN or unique superannuation identifier level.
- The following sections describe the contextualisation and the data elements required to be supplied within the XBRL instance document.

9.1 PREREQUISITES

- (a) The member **MUST** have supplied the transferring fund with sufficient information via the Initiate Rollover Message to enable them to process the rollover request to enable this message to be successfully processed.

9.2 MESSAGE TRANSPORT LINKAGES

- (a) A Rollover Transaction Request **MUST** be accompanied by the attributes set out in the Rollover Transaction Request – Message Transport Linkage Attributes Table below.
- (b) These attributes apply in addition to the rules set out in section 2 of this document and the document titled Data and Payment Standards - Message Orchestration and Profiles as referred to in Schedule 5 to the Standard.

Rollover Transaction Request – Message Transport Linkage Attributes Table

Linkage Attribute	Instructions / Rules	Rule Imp.	Message Code
To	This value MUST identify the entity undertaking the "ReceivingFund" role, or the gateway used by the Receiving Fund of the Rollover Transaction Request process. Where the entity can be identified by a USI, a USI MUST be used as the TO PartyID, otherwise the ABN of the entity MUST be used.	N/A	N/A

From	This value MUST identify the entity undertaking the "TransferringFund" role, or the gateway used by the Transferring Fund of the Rollover Transaction Request process. Where the entity can be identified by a USI, a USI MUST be used as the FROM PartyID, otherwise the ABN of the entity MUST be used.	N/A	N/A
Property	<ol style="list-style-type: none"> 1. Mandatory. 2. Property name MUST be "TargetABN". 3. This MUST be the same value as that provided in the ReceivingSuperFundABNDimension within the Member Rollover Transaction context for this message. 	<ol style="list-style-type: none"> 1.MIG 2.MIG 3.MIG 	<ol style="list-style-type: none"> 1. N/A 2 and 3: SUPER.GEN.GEN.20
Property	<ol style="list-style-type: none"> 1. Conditional. Mandatory if a value has been provided for the ReceivingSuperannuationFundUniqueSuperannuationIdentifierDimension within the Member Rollover Transaction context for this message. 2. Property name MUST be "TargetUniqueSuperannuationIdentifier". 3. This MUST be the same value as that provided in the ReceivingSuperannuationFundUniqueSuperannuationIdentifierDimension within the Member Rollover Transaction context for this message. 	<ol style="list-style-type: none"> 1.MIG 2.MIG 3.MIG 	<ol style="list-style-type: none"> 1. N/A 2 and 3: SUPER.GEN.GEN.20
Property	<ol style="list-style-type: none"> 1. Mandatory. 2. Property name MUST be "SourceABN". 3. This value MUST be set to the ABN of the Party to whom any rollover transaction outcome messages will be routed. 	<ol style="list-style-type: none"> 1.MIG 2.MIG 3.MIG 	<ol style="list-style-type: none"> 1. N/A 2 and 3: SUPER.GEN.GEN.20
Property	<ol style="list-style-type: none"> 1. Optional. This property SHOULD be provided where the sender requires that the routing of any rollover transaction outcome response messages is based on a particular Unique Superannuation Identifier. 2. Property name MUST be "SourceUniqueSuperannuationIdentifier". 3. This value MUST be set to the Unique Superannuation Identifier upon which routing of rollover transaction outcome response messages is based. 	<ol style="list-style-type: none"> 1.MIG 2.MIG 3.MIG 	<ol style="list-style-type: none"> 1. N/A 2 and 3: SUPER.GEN.GEN.20

Property	1. Mandatory.	1.MIG	1. N/A
	2. Property name MUST be "RecordCount".	2.MIG	2: SUPER.GEN.GEN.20
	3. This value will be the total number of records within the associated payload. A record refers to a single member XBRL context. In the case of RTR this is the Member Rollover Transaction context. This value MUST be populated by the party that is generating the message.	3.MIG	3. N/A

9.3 MESSAGE CONTEXT SUMMARY

- (a) The Rollover Transaction Request context MUST conform with the specifications in the Rollover Transaction Request Context Table.
- (b) Note: refer to the relevant Context Specification in section 3 of this document for the development requirements of each context identified in Column 1 of the Rollover Transaction Request Context Table.
- (c) If any specifications in the Rollover Transaction Request Context Table contradict any specifications within the relevant Context Specification section 3 of this document, then the specifications below take precedence.

Rollover Transaction Request Context Table

Context Spec	Instructions / Rules	Rule Imp.	Message Code
Message Sender	1. Mandatory and MUST only be one context declaration.	1. MIG	1. SUPER.GEN.GEN. 6 (missing Context) or SUPER.GEN.GEN. 10 (too many Contexts)
Message Receiver	1. Mandatory and MUST only be one context declaration.		
Rollover Payment	1. Mandatory and MUST only be one context declaration.		
Member Rollover Transaction	1. Mandatory and MUST have at least 1 context declaration but MAY have many.	1. MIG	1. SUPER.GEN.GEN. 6

9.4 MESSAGE CONTENT TABLES

Explanatory Notes:

- The Message Content Tables set out the data elements which are to be supplied within the Rollover Transaction Request message.
- The data elements have been grouped by context definitions.
- Unless specifically provided for there is only to be one instance of XBRL facts/tuples reported within this context.

9.4.1 Message sender details

The message sender data content of a Rollover Transaction Request MUST conform with the specifications in the Rollover Transaction Request – Message Sender Data Content Table.

Rollover Transaction Request – Message Sender Data Content Table

Context – Message Sender				
Seq No.	XBRL Fact	Instructions / Rules	Rule Imp.	Message Code
1.	OrganisationName1.02.00 (Tuple)	1. Mandatory. 2. Must only have one occurrence.	1. MIG 2. MIG	1. SUPER.GEN.GEN.4 2. SUPER.GEN.GEN.8
1.1.	OrganisationNameDetails.OrganisationalNameType.Code	1. Mandatory. 2. MUST be set "MN".	1. MIG 2. MIG	1. SUPER.GEN.GEN.4 2. SUPER.GEN.GEN.5
1.2.	OrganisationNameDetails.OrganisationalName.Text	1. Mandatory.	1. MIG	1. SUPER.GEN.GEN.4
2.	PersonStructuredName1.02.00 (Tuple)	1. Mandatory. 2. Must only have one occurrence.	1. MIG 2. MIG	1. SUPER.GEN.GEN.4 2. SUPER.GEN.GEN.8
2.1.	PersonNameDetails.FamilyName.Text	1. Mandatory. See Appendix A for additional business rules associated with this	1. MIG	1. SUPER.GEN.GEN.4

Context – Message Sender				
Seq No.	XBRL Fact	Instructions / Rules	Rule Imp.	Message Code
		data element.		
2.2.	PersonNameDetails.GivenName.Text	1. Mandatory.	1. MIG	1. SUPER.GEN.GEN.4
2.3.	PersonNameDetails.OtherGivenName.Text	1. Optional.	1. MIG	N/A
2.4.	PersonNameDetails.Position.Text	1. SBR Common Module Element which is not relevant to this message. It is not required and will be ignored if provided.	N/A	N/A
3.	ElectronicContactElectronicMail1.02.00 (Tuple)	1. Mandatory. 2. Must only have one occurrence.	1. MIG 2. MIG	1. SUPER.GEN.GEN.4 2. SUPER.GEN.GEN.8
3.1.	ElectronicContact.ElectronicMail.Usage.Code	1. Mandatory. 2. MUST be set to "03" (Contact).	1. MIG	1. SUPER.GEN.GEN.4 2. SUPER.GEN.GEN.5
3.2.	ElectronicContact.ElectronicMail.Address.Text	1. Mandatory.	1. MIG	1. SUPER.GEN.GEN.4
4.	ElectronicContactTelephone1.02.00 (Tuple)	1. Mandatory. 2. Must only have one occurrence.	1. MIG 2. MIG	1. SUPER.GEN.GEN.4 2. SUPER.GEN.GEN.8
4.1.	ElectronicContact.Telephone.Usage.Code	1. Mandatory. 2. MUST be set to "03" (Contact).	1. MIG	1. SUPER.GEN.GEN.4 2. SUPER.GEN.GEN.5
4.2.	ElectronicContact.Telephone.ServiceLine.Code	1. Mandatory. 2. Valid values are "01" for Mobile or "02" for Landline or fixed line.	1. MIG 2. MIG	1. SUPER.GEN.GEN.4 2. SUPER.GEN.GEN.5
4.3.	ElectronicContact.Telephone.Area.Code	1. Optional.	1. MIG	N/A

Context – Message Sender				
Seq No.	XBRL Fact	Instructions / Rules	Rule Imp.	Message Code
4.4.	ElectronicContact.Telephone.Minimal.Number	1. Mandatory.	1. MIG	1. SUPER.GEN.GEN.4

9.4.2 Message receiver details

The message receiver data content of a Rollover Transaction Request MUST conform with the specifications in the Rollover Transaction Request – Message Receiver Data Content Table.

Rollover Transaction Request – Message Receiver Data Content Table

Context – message receiver				
Seq no.	XBRL Fact	Instructions / Rules	Rule Imp.	Message Code
1.	OrganisationName1.02.00 (Tuple)	1. Mandatory. 2. Must only have one occurrence.	1. MIG 2. MIG	1. SUPER.GEN.GEN.4 2. SUPER.GEN.GEN.8
1.1.	OrganisationNameDetails.OrganisationalNameType.Code	1. Mandatory. 2. MUST be set to “MN”.	1. MIG 2. MIG	1. SUPER.GEN.GEN.4 2. SUPER.GEN.GEN.5
1.2.	OrganisationNameDetails.OrganisationalName.Text	1. Mandatory.	1. MIG	1. SUPER.GEN.GEN.4

9.4.3 Member rollover transaction details

The member rollover transaction data content of a Rollover Transaction Request MUST conform with the specifications in the Rollover Transaction Request – Member Rollover Transaction Data Content Table.

Rollover Transaction Request – Member Rollover Transaction Data Content Table

Context – member rollover transaction				
Seq no.	XBRL Fact	Instructions/Rules	Rule Imp.	Message Code
1.	PersonStructuredName1.02.00 (Tuple)	1. Mandatory. 2. Must only have one occurrence	1. MIG 2. MIG	1. SUPER.GEN.GEN.4 2. SUPER.GEN.GEN.8
1.1.	PersonNameDetails.FamilyName.Text	1. Mandatory. See Appendix A for additional business rules associated with this data element.	1. MIG	1. SUPER.GEN.GEN.4
1.2.	PersonNameDetails.GivenName.Text	1. Mandatory.	1. MIG	1. SUPER.GEN.GEN.4
1.3.	PersonNameDetails.OtherGivenName.Text	1. Optional.	1. MIG	1. N/A
1.4.	PersonNameDetails.Position.Text	1. SBR Common Module Element which is not relevant to this message. It is not required and will be ignored if provided.	1. MIG	1. N/A
2.	PersonDemographicDetails.Sex.Code	1. Mandatory.	1. MIG	1. SUPER.GEN.GEN.4
3.	PersonDemographicDetails.Birth.Date	1. Mandatory.	1. MIG	1. SUPER.GEN.GEN.4
4.	AddressDetails3.02.01 (Tuple)	1. Mandatory. 2. Must only have one occurrence.	1. MIG 2. MIG	1. SUPER.GEN.GEN.4 2. SUPER.GEN.GEN.8

Context – member rollover transaction				
Seq no.	XBRL Fact	Instructions/Rules	Rule Imp.	Message Code
4.1.	AddressDetails.Usage.Code	1. Mandatory. 2. MUST be set to “RES” if residential address is known. 3. If residential address is not known MUST be set to “POS”.	1. MIG 2. MIG 3. MIG	1. SUPER.GEN.GEN.4 2. SUPER.GEN.GEN.5 3. SUPER.GEN.GEN.5
4.2.	AddressDetails.Line1.Text	1. Mandatory.	1. MIG	1. SUPER.GEN.GEN.4
4.3.	AddressDetails.Line2.Text	1. Optional.	1. MIG	1. N/A
4.4.	AddressDetails.Line3.Text	1. Optional.	1. MIG	1. N/A
4.5.	AddressDetails.Line4.Text	1. Optional.	1. MIG	1. N/A
4.6.	AddressDetails.LocalityName.Text	1. Mandatory. 2. Maximum length 50 characters.	1. MIG 2. MIG	1. SUPER.GEN.GEN.4 2. SUPER.GEN.GEN.5
4.7.	AddressDetails.Postcode.Text	1. Conditional – if AddressDetails.Country.Code is “au” then this field is mandatory.	1. MIG	1. SUPER.GEN.GEN.7
4.8.	AddressDetails.StateOrTerritory.Code	1. Conditional – if AddressDetails.Country.Code is “au” then this field is mandatory.	1. MIG	1. SUPER.GEN.GEN.7
4.9.	AddressDetails.Country.Code	1. Mandatory.	1. MIG	1. SUPER.GEN.GEN.4
5.	Identifiers.TaxFileNumberNotProvided.Indicator	1. Mandatory. See 4.4.4 for business rules.	1. MIG	1. SUPER.GEN.GEN.4

Context – member rollover transaction				
Seq no.	XBRL Fact	Instructions/Rules	Rule Imp.	Message Code
6.	SuperannuationFundDetails.MemberClient.Identifier	1. Optional – Member ID allocated by the Receiving Fund.	1. MIG	1. N/A
7.	SuperannuationFundDetails.LostMember.Code	1. Optional.	1. MIG	1. N/A
8.	SuperannuationFundDetails.EligibleServicePeriodStart.Date	1. Mandatory.	1. MIG	1. SUPER.GEN.GEN.4
9.	IncomeTax.Superannuation.TaxFreeComponent.Amount	1. Mandatory.	1. MIG	1. SUPER.GEN.GEN.4
10.	SuperannuationRollover.KiwiSaverTax-freeComponent.Amount	1. Optional.	1. MIG	1. N/A
11.	IncomeTax.Superannuation.TaxableComponentTaxedElement.Amount ⁴	1. Mandatory.	1. MIG	1. SUPER.GEN.GEN.4
12.	IncomeTax.Superannuation.TaxableComponentUntaxedElement.Amount ⁵	1. Mandatory.	1. MIG	1. SUPER.GEN.GEN.4
13.	SuperannuationRollover.BenefitComponentsPreserved.Amount	1. Mandatory.	1. MIG	1. SUPER.GEN.GEN.4
14.	SuperannuationRollover.KiwiSaverPreserved.Amount	1. Optional.	1. MIG	1. N/A
15.	SuperannuationRollover.BenefitComponentsUnrestricted.Amount	1. Mandatory.	1. MIG	1. SUPER.GEN.GEN.4
16.	SuperannuationRollover.BenefitComponentsRestricted.Amount	1. Mandatory.	1. MIG	1. SUPER.GEN.GEN.4

⁴ Cents may be included. Although definitional guidance for this element states “do not include cents” the datatype ‘xbrli:monetaryItemType’ does allow decimal/cents to be entered as a valid value.

⁵ Cents may be included. Although definitional guidance for this element states “do not include cents” the datatype ‘xbrli:monetaryItemType’ does allow decimal/cents to be entered as a valid value.

Context – member rollover transaction				
Seq no.	XBRL Fact	Instructions/Rules	Rule Imp.	Message Code
17.	SuperannuationRollover.TransferWholeBalance.Indicator	1. Mandatory. “true” = Rollover entire balance. “false” = Rollover partial amount.	1. MIG	1. SUPER.GEN.GEN.4
18.	SuperannuationRollover.InsuredDeathCover.Amount	1. Conditional – Mandatory if SuperannuationRollover.TransferWholeBalance.Indicator = “true”.	1. MIG	1. SUPER.GEN.GEN.7
19.	SuperannuationRollover.InsuredTotalPermanentDisablementCover.Amount	1. Conditional – Mandatory if SuperannuationRollover.TransferWholeBalance.Indicator = “true”.	1. MIG	1. SUPER.GEN.GEN.7
20.	SuperannuationRollover.InsuredIncomeProtectionMonthlyCover.Amount	1. Conditional – Mandatory if SuperannuationRollover.TransferWholeBalance.Indicator = “true”.	1. MIG	1. SUPER.GEN.GEN.7
21.	SuperannuationRollover.RemainingBenefit.Indicator	1. Optional.	1. MIG	1. N/A
22.	SuperannuationRollover.UnclaimedSuperannuationMoneyReason.Code	1. Optional. 2. Mandatory for a USM rollover from a superannuation fund to the ATO.	1. MIG	1. N/A
23.	SuperannuationRollover.UnclaimedSuperannuationMoney.Date	1. Optional. 2. Mandatory for a USM rollover from a superannuation fund to the ATO.	1. MIG	1. N/A
24.	SuperannuationRolloverOtherDetails.02.00 (Tuple)	1. Optional - zero to many <i>See 4.4.5 for an explanation.</i>	1. MIG	1. N/A

Context – member rollover transaction				
Seq no.	XBRL Fact	Instructions/Rules	Rule Imp.	Message Code
24.1.	SuperannuationRollover.OtherDetails.Text	1. Mandatory.	1. MIG	1. SUPER.GEN.GEN.4
24.2.	SuperannuationRollover.OtherDetails.Description	1. Mandatory	1. MIG	1. SUPER.GEN.GEN.4

9.4.4 Fund payment details

The fund payment data content of a Rollover Transaction Request MUST conform with the specifications in the Rollover Transaction Request – Fund Payment Data Content Table.

Rollover Transaction Request – Fund Payment Data Content Table

Context – fund payment transaction				
Seq no.	XBRL Fact	Instructions/Rules	Rule Imp.	Message Code
1.	PaymentMechanism.PaymentReferenceNumber.Identifier	1. Mandatory. 2. MUST match the reference number used in the electronic payment.	1. MIG 2. Receiver	1. SUPER.GEN.GEN.4 2. SUPER.GEN.GEN.12
2.	PaymentRecord.Payment.Amount	1. Mandatory.	1. MIG	1. SUPER.GEN.GEN.4
3.	Financialinstitutionaccount1.02.00 (Tuple)	1. Mandatory. 2. Must only have one occurrence.	1. MIG 2. MIG	1. SUPER.GEN.GEN.4 2. SUPER.GEN.GEN.8

Context – fund payment transaction				
Seq no.	XBRL Fact	Instructions/Rules	Rule Imp.	Message Code
3.1.	FinancialInstitutionAccount.BankStateBranch.Number	BSB of the Receiving Fund. 1. Mandatory. 2. MUST be valid / known to Receiving Fund.	1. MIG 2. Receiver	1. SUPER.GEN.GEN.4 2. SUPER.GEN.GEN.15
3.2.	FinancialInstitutionAccount.FinancialInstitutionAccount.Number	Account Number of the Receiving Fund. 1. Mandatory. 2. MUST be valid / known to Receiving Fund.	1. MIG 2. Receiver	1. SUPER.GEN.GEN.4 2. SUPER.GEN.GEN.16
3.3.	FinancialInstitutionAccount.FinancialInstitutionAccountName.Text	Account Name of the Receiving Fund. 1. Mandatory. 2. MUST be valid / known to Receiving Fund.	1. MIG 2. Receiver	1. SUPER.GEN.GEN.4 2. SUPER.GEN.GEN.17
3.4.	FinancialInstitutionAccount.FinancialInstitutionBranchName.Text	1. SBR Common Module Element which is not relevant to this message. It is not required and will be ignored if provided.	1. MIG	1. N/A
3.5.	FinancialInstitutionAccount.FinancialInstitutionName.Text	1. SBR Common Module Element which is not relevant to this message. It is not required and will be ignored if provided.	1. MIG	1. N/A

9.5 ROLLOVER PAYMENTS MESSAGE SPECIFICATION

Explanatory notes:

The rollover payment interaction consists of the following message exchanges:

- Payment request from the transferring fund to their financial institution to move money to the receiving fund.
- The movement of money between the transferring fund's financial institution and the receiving fund's financial institution.
- The receiving fund's financial institution provides a statement to the receiving fund to enable the receiving fund to reconcile the rollover payment to the member's account(s).
- For the payment methods that **MUST** be used see the document titled *Data and Payment Standards – Payment Methods* as referred to in Schedule 3 to the Standard.

10. ROLLOVER TRANSACTION OUTCOME RESPONSE MESSAGE SPECIFICATION

Explanatory Notes:

- This message is used when a receiving fund has processed Rollover Transaction Request messages.
- There is NO XBRL business document contained within this message. Additional rules that MUST be followed in sending error and outcome messages are set out in the document titled *Data and Payment Standards – Error Code Management* as referred to in Schedule 6 to the Standard.

10.1 PREREQUISITES

- (a) The Rollover Transaction Outcome Response message MUST be sent by the receiving fund once they have processed the Rollover Transaction Request message.
- (b) The Rollover Transaction Outcome Response message MAY be sent:
 - (i) as a single response to a Rollover Transaction Request, once processing is complete for all members included in the Rollover Transaction Request; or
 - (ii) multiple times for a single Rollover Transaction Request, for any subset of members and errors discovered or successful outcomes encountered during processing of the Rollover Transaction Request.

Rollover Transaction Outcome Response Message Structure Table

Outcome of Rollover Transaction Request Message	Message Content
Rollover Transaction processed successfully	The information message SUPER.GEN.RLVR.2 MUST be provided to indicate that the rollover was processed successfully.
Rollover unable to be processed (fully or partially)	<ol style="list-style-type: none"> 1. The appropriate error message MUST be provided to indicate that the message cannot be processed (either fully or partially). 2. If a refund is associated with the error response message, refer to <i>Schedule 6 – Error Code Management</i> for additional information required in the response message.

10.2 MESSAGE TRANSPORT LINKAGES

- (a) The Rollover Transaction Outcome Response message MUST be accompanied by the attributes set out in the Rollover Transaction Outcome Response – Message Transport Linkages Attribute Table.
- (b) These attributes apply in addition to the rules set out in section 2 of this document and the rules set out in the document titled *Data and Payment Standards - Message Orchestration and Profiles* as referred to in Schedule 5 to the Standard.

Rollover Transaction Outcome Response – Message Transport Linkage Attributes Table

Linkage Attribute	Instructions / Rules	Rule Imp	Message Code
To	This value MUST be set to the same value as that provided in the FROM field for the associated Rollover Transaction Request message.	N/A	N/A
From	This value MUST be set to the same value as that provided in the TO field for the associated Rollover Transaction Request message.	N/A	N/A
Property	<p>1. Mandatory.</p> <p>2. Property name MUST be "TargetABN".</p> <p>3. This MUST be the same value as that provided in the SourceABN property of the Member Rollover Transaction context for the associated Rollover Transaction Request message.</p>	<p>1.MIG</p> <p>2.MIG</p> <p>3.MIG</p>	<p>1. N/A</p> <p>2 and 3: SUPER.GEN.GEN.20</p>
Property	<p>1. Conditional. Mandatory if the associated Rollover Transaction Request message carries a SourceUniqueSuperannuationIdentifier property.</p> <p>2. Property name MUST be "TargetUniqueSuperannuationIdentifier".</p> <p>3. This MUST be the same value as that provided in the SourceUniqueSuperannuationIdentifier property of the associated Rollover Transaction Request message.</p> <p>This property SHOULD NOT be provided if the SourceUniqueSuperannuationIdentifier property of the associated Rollover Transaction Request message is not present.</p>	<p>1.MIG</p> <p>2.MIG</p> <p>3.MIG</p>	<p>1. N/A</p> <p>2 and 3: SUPER.GEN.GEN.20</p>

11. USM ROLLOVER MESSAGE SPECIFICATION

Explanatory Notes:

- The USM Rollover Message is used by the ATO, the fund or the intermediary acting on behalf of the receiving fund to transfer Unclaimed Superannuation Money (USM).
- The USM Rollover Message has been designed based on the key principle that **there MUST be a one-to-one relationship between a payment and a USM Rollover Request Message** (that is, a USM Rollover Request Message MUST only contain data relating to one payment to a financial institution, and a payment MUST be in relation to a single USM Rollover Transaction Request message).
- The USM Rollover Message has been designed to cater for payments to be made at either the Fund ABN or unique superannuation identifier level.
- The following sections describe the contextualisation and the data elements required to be supplied within the XBRL instance document.

11.1 MESSAGE TRANSPORT LINKAGES

- (a) A USM Rollover MUST be accompanied by the attributes set out in the USM Rollover Message Transport Linkage Attributes Table below.
- (b) These attributes apply in addition to the rules set out in section 2 of this document and the document titled *Data and Payment Standards - Message Orchestration and Profiles* as referred to in Schedule 5 to the Standard.

USM Rollover Message Transport Linkage Attributes Table

Linkage Attribute	Instructions / Rules	Rule Imp.	Message Code
To	This value MUST identify the entity undertaking the "ReceivingFund" role, or the gateway of the Receiving Fund. Where the entity can be identified by a USI, a USI MUST be used as the TO PartyID, otherwise the ABN of the entity MUST be used. For a USM rollover from a superannuation fund to the ATO, this value MUST be the ABN of the ATO.	N/A	N/A
From	This value MUST identify the entity undertaking the "TransferringFund" role, or the gateway of the Transferring Fund. Where the entity can be identified by a USI, a USI MUST be used as the TO PartyID, otherwise the ABN of the entity MUST be used. For a USM rollover from the ATO to a superannuation fund this value MUST be the ABN of the ATO.	1.MIG	N/A

Property	<p>1. Mandatory.</p> <p>2. Property name MUST be “TargetABN”.</p> <p>3. This MUST be the same value as that provided in the ReceivingSuperFundABNDimension within the Member Rollover Transaction context for this message.</p>	<p>1.MIG</p> <p>2.MIG</p> <p>3.MIG</p>	<p>1. N/A</p> <p>2 and 3: SUPER.GEN.GEN.20</p>
Property	<p>1. Conditional. Mandatory if a value has been provided for the ReceivingSuperannuationFundUniqueSuperannuationIdentifierDimension within the Member Rollover Transaction context for this message.</p> <p>2. Property name MUST be “TargetUniqueSuperannuationIdentifier”.</p> <p>3. This MUST be the same value as that provided in the ReceivingSuperannuationFundUniqueSuperannuationIdentifierDimension within the Member Rollover Transaction context for this message.</p>	<p>1.MIG</p> <p>2.MIG</p> <p>3.MIG</p>	<p>1. N/A</p> <p>2 and 3: SUPER.GEN.GEN.20</p>
Property	<p>1. Mandatory.</p> <p>2. Property name MUST be “SourceABN”.</p> <p>3. This MUST be the same value as that provided in the TransferringSuperFundABNDimension within the Member Rollover Transaction context for this message.</p>	<p>1.MIG</p> <p>2.MIG</p> <p>3.MIG</p>	<p>1 and 2: SUPER.GEN.GEN.20</p> <p>3. N/A</p>
Property	<p>1. Optional. This property SHOULD be provided where the sender requires that the routing of any rollover transaction outcome response messages is based on a particular Unique Superannuation Identifier.</p> <p>2. Property name MUST be “SourceUniqueSuperannuationIdentifier”.</p> <p>3. This value MUST be set to the Unique Superannuation Identifier upon which routing of rollover transaction outcome response messages is based.</p>	<p>1.MIG</p> <p>2.MIG</p> <p>3.MIG</p>	<p>1. N/A</p> <p>2 and 3: SUPER.GEN.GEN.20</p>

Property	<ol style="list-style-type: none"> 1. Mandatory. 2. Property name MUST be "RecordCount". 3. This value will be the total number of records within the associated payload. <p>A record refers to a single member XBRL context. In the case of USM Rollover this is the Member Rollover Transaction context.</p>	<ol style="list-style-type: none"> 1.MIG 2.MIG 3.MIG 	<ol style="list-style-type: none"> 1. N/A 2: SUPER.GEN.GEN.20 3. N/A
----------	---	---	---

11.2 MESSAGE CONTEXT SUMMARY

The context specifications to be used in this message are identical to those specified in section 9.3 – Rollover Transaction Request Message Context Summary Table.

11.3 MESSAGE CONTENT TABLES

The message content tables to be used in this message are identical to those specified in Section 9.4 – Rollover Transactions Request Message Content Tables.

12. USM ROLLOVER OUTCOME RESPONSE MESSAGE SPECIFICATION

Explanatory Notes:

- This message is used when a USM rollover message has been processed.
- There is NO XBRL business document contained within this message.
- Additional rules that MUST be followed in sending error and outcome messages are set out in the document titled *Data and Payment Standards – Error Code Management* as referred to in Schedule 6 to the Standard.

12.1 PREREQUISITES

- (a) The USM Rollover Outcome Response message MUST be sent after the message has been processed.
- (b) The USM Rollover Outcome Response message MAY be sent:
 - (i) as a single response to a USM Rollover Transaction Request, once processing is complete for all members included in the USM Rollover Transaction Request; or
 - (ii) multiple times for a single USM Rollover Transaction Request, for any subset of members and errors discovered or successful outcomes encountered during processing of the USM Rollover Transaction Request.

USM Rollover Outcome Response Message Structure Table

Outcome of USM Rollover Message	Message Content
USM Rollover successfully processed	The information message SUPER.GEN.RLVR.2 MUST be provided to indicate that the USM Rollover was processed successfully.
USM Rollover unable to be processed (fully or partially)	<ol style="list-style-type: none"> 1. The appropriate error message MUST be provided to indicate that the message cannot be processed (either fully or partially). 2. If a refund is associated with the error response message, refer to <i>Schedule 6 – Error Code Management</i> for additional information required in the response message.

12.2 MESSAGE TRANSPORT LINKAGES

- (a) The USM Rollover Outcome Response message MUST be accompanied by the attributes set out in the USM Rollover Outcome Response – Message Transport Linkage Attributes Table.
- (b) These attributes apply in addition to the rules set out in section 2 of this document and the rules set out in the document titled *Data and Payment Standards - Message Orchestration and Profiles* as referred to in Schedule 5 to the Standard.

USM Rollover Outcome Response – Message Transport Linkage Attributes Table

Linkage Attribute	Instructions / Rules	Rule Imp.	Message Code
-------------------	----------------------	-----------	--------------

To	This value MUST be set to the same value as that provided in the FROM field for the associated USM Rollover message.	N/A	N/A
From	This value MUST be set to the same value as that provided in the TO field for the associated USM Rollover message.	N/A	N/A
Property	<ol style="list-style-type: none"> 1. Mandatory. 2. Property name MUST be "TargetABN". 3. This MUST be the same value as that provided in the SourceABN property of the associated USM Rollover Transaction Request message. 	<ol style="list-style-type: none"> 1.MIG 2.MIG 3.MIG 	<ol style="list-style-type: none"> 1. N/A 2 and 3: SUPER.GEN.GEN.20
Property	<ol style="list-style-type: none"> 1. Conditional. Mandatory if the associated USM rollover message carries a SourceUniqueSuperannuationIdentifier property. 2. Property name MUST be "TargetUniqueSuperannuationIdentifier". 3. This MUST be the same value as that provided in the SourceUniqueSuperannuationIdentifier property of the associated USM Rollover message. This property SHOULD NOT be provided if the SourceUniqueSuperannuationIdentifier property of the associated USM rollover message is not present. 	<ol style="list-style-type: none"> 1.MIG 2.MIG 3.MIG 	<ol style="list-style-type: none"> 1. N/A 2 and 3: SUPER.GEN.GEN.20

APPENDIX A: ADDITIONAL BUSINESS RULES

GIVEN AND FAMILY NAME

It is possible that an individual may have only one name and, as the given and family names are mandatory within the data standard, the following convention **MUST** be used in order to purposely provide a single name.

The name of the individual is to be placed into `PersonNameDetails.FamilyName.Text`, and `PersonNameDetails.GivenName.Text` **MUST** be populated with the value **"NOT APPLICABLE"** (Note: quotes not to be included). This will clearly indicate that the individual has a single name and that the provider of the instance document has not simply failed to provide the given name item.