

Self-managed super funds

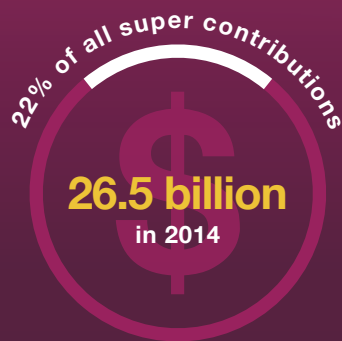
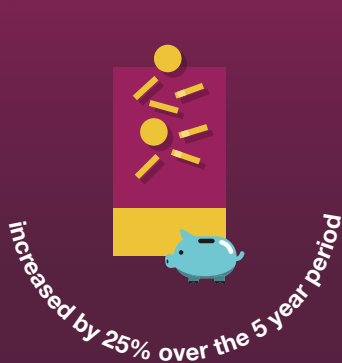
annual statistics overview

HIGH LEVEL STATS

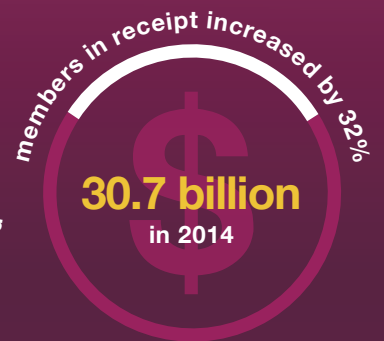
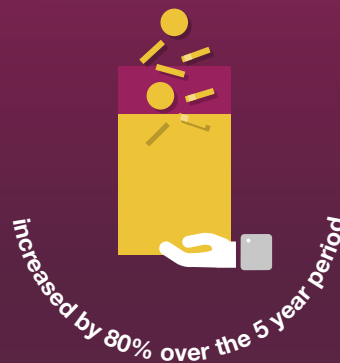


INS & OUTS

SMSF contributions:



SMSF benefit payments:



LET'S TALK ABOUT SMSFS



Over the five years to 2014, there was a shift of SMSFs moving into the pension phase (8%)



FOR THE FIRST TIME



For the first time in 2014 the average assets per fund exceeded \$1 million.



78% of all SMSFs at June 2015 had individual trustees.